

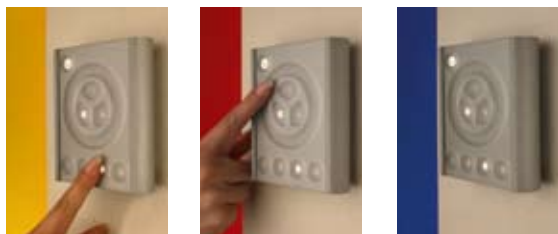
Colorfox VX01™



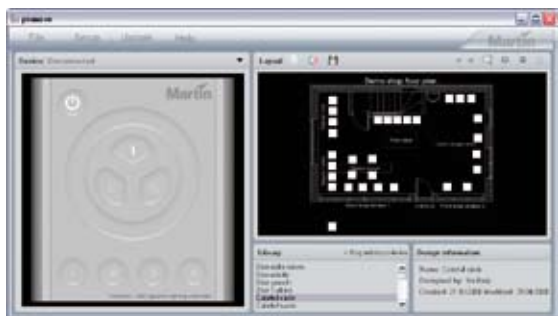
Colorfox VX01™ is the first lighting controller specifically designed for architectural use with dynamic color changing fixtures. This incredibly simple control solution allows users to customize and personalize a variety of architectural lighting settings.



Colorfox features an attractive design that enables it to fit into nearly any design environment. Its user-friendly interface allows even inexperienced users to access the benefits of dynamic light.



This intuitive controller allows for easy playback of static and dynamic scenes and provides a simple-to-use interface for users to alter the hue, saturation and intensity of their surroundings. Change color and speed by the mere push of a button and then resave it to any preset. Color temperature can be easily adjusted to match different luminaire types (RGB or CMY) for identical and consistent color matching.



Connect to any PC via USB for easy setup and uploading of new scenes using PixMove software.

Physical

Dimensions (D x W x H)	28 x 100 x 110 mm (1.1 x 3.9 x 4.3 in)
Weight	277 g (9.8 oz.)

Electrical

AC power (external PSU)	100 to 240 V, 50/60 Hz
Controller input	48 V DC
Power consumption	2 W

Control and programming

Control interface	DMX 512
Control channels	512
Maximum number of fixture types	10
Maximum number of fixtures/zones	170
Recallable memories (presets)	4

Connections

Control interface unit

Communication with PC	USB
DMX out and POE in	RJ-45

External power supply unit

DMX in/thru, POE out	2 x RJ45
AC power input	1.5 m (4.9 ft.) UL-approved power cable

Approvals

External power supply unit	cUL/UL, CE, CCC, TUV, FCC
Controller	CE

Ordering information

Colorfox VX01 Controller	P/N 90734500
--------------------------	--------------

- Touch-sensitive dial with acoustic and visual feedback
- 4 memory buttons to run/store/adjust your favorite looks and dynamic scenes
- Select any color fast and easily by scrolling the color wheel
- Connects directly to DMX via RJ-45 and controls up to 170 fixtures or zones (maximum 512 channels)
- Create and upload dynamic lighting scenes using free PC software and USB connectivity
- Easily wall-mounted using the included bracket
- For straightforward control of Martin architectural luminaires

Martin Professional A/S

Olof Palmes Allé 18 | 8200 Aarhus N | Denmark | Phone: +45 87 40 00 00 | Fax: +45 87 40 00 10 | www.martin.com

Founded in 1986 and headquartered in Aarhus, Denmark, Martin Professional is a world leader in the creation of dynamic lighting solutions for the entertainment, architectural, and commercial sectors. Martin lighting solutions are industry standard on top tours and events, grace prestigious theatres, energize nightclubs, and decorate major television studios around the globe. The company operates the industry's most complete and capable distributor network with local partners in nearly 100 countries. For more information please visit www.martin.com

