

## Copper Fluid line, 24/7 & Magnum Hazer Instruction P/N 35011502

If a new Block is to be ordered for any reason, please, before ordering check which "pump to fluid line" piping is fitted to the unit and order accordingly.

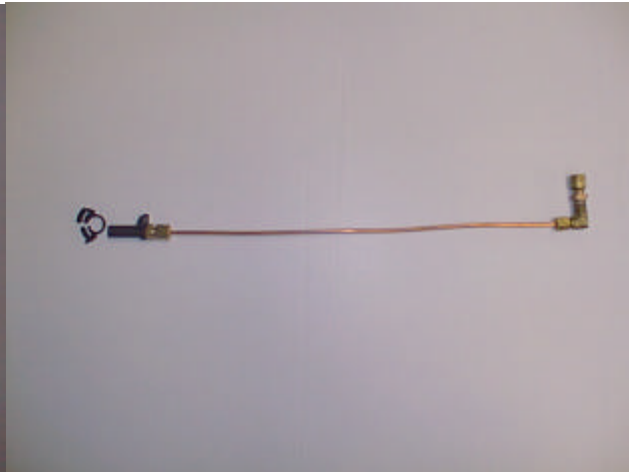
### **50303517B Upgrade Copper Fluid line 24/7**

- 08250107 Hose clamp 9.2-10.8 plastic
- 62520056 Fluid line out copper, ZR24/7
- 35011502 Instruction, Copper line 24/7
- 26460540 Fluid jet,0.5mm,ZR24/7,brass
- 26460550 Adaptor,4mm-1/8BSP fem,ZR24/7
- 26460560 Elbow,1/8BSP-1/8tube,ZR24/7
- 16120170 O-ring, 2.9i/d x 1.78, epdm (x2 off)
- 35011503 Instruction, jet cleaning 24/7

**Picture A**



**Picture B**



Part number 50303517, is to be used for a straight forward upgrade, this will replace the Black EPDM pipe, that runs from the pump to the heat exchanger with the new style 1/8" copper fluid line.

The grey sealed grommet already fitted to the unit is to be re-used.

\*\*\*\*\*

### **62520056 Fluid line out copper, ZR24/7**

- 14026004 Tube rubber d=4,0 D=9 30mm long
- 26460260 Adaptor 1/8 tube-3/16 hose tail
- 14024000 Tube copper 1/8" X 22G soft
- 08250105 Hose clamp 7.9-9.2

\*\*\*\*\*

### **50303518 Upgrade block copper line 24/7**

- 62520056 Fluid line out copper, ZR24/7
- 35011502 Instruction, Copper line 24/7
- 08250107 Hose clamp 9.2-10.8 plastic

## Copper Fluid line, 24/7 & Magnum Hazer Instruction P/N 35011502

### **Please follow the below instructions if upgrading the Copper fluid line on either a ZR24/7 or a Magnum Hazer**

Before commencing upgrade, ensure unit is disconnected from the mains and remove the outer lid and handle.

1. Remove the Black Herbie clip from the EPDM pipe; this is connected to the input of the Brass hose tail fitted to the block.
2. Remove the Black EPDM from the Hose tail with a gentle pull.

#### **Instruction 1**



#### **Instruction 2**

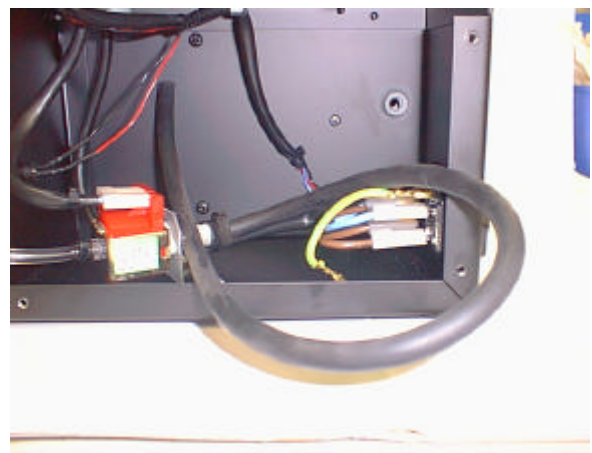


3. Remove the Hose tail from the input to the block, leaving the Nut and Olive connected to the Block.
4. Remove the Black EPDM pipe by pulling it through the grommet from the pump side. Remove the Herbie clip that holds the pipe to the pump.

#### **Instruction 3**



#### **Instruction 4**



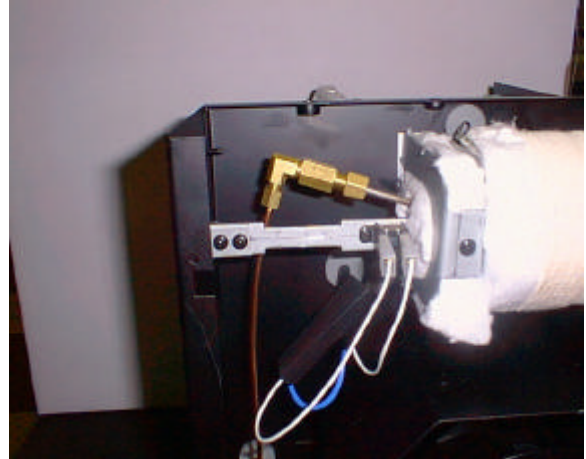
## Copper Fluid line, 24/7 & Magnum Hazer Instruction P/N 35011502

5. Push the New Copper upgrade pipe through the Grey grommet from the pump side and connect the 30mm Black EPDM pipe to the pump. Use the Herbie clip (BB type P/N 08250107) to secure the EPDM pipe to the pump.
6. Assemble the new type elbow, as per picture (A) Fit the new Brass connector on to the input of the block and tighten. Push the 1/8<sup>th</sup> Copper pipe into the 1/8<sup>th</sup> elbow ensuring the Nut & Olive are in place and tighten.
7. Seal the grommet with silicone; this stops any moisture that is produced from entering the electronics compartment. Ensure all fittings are secure before turning the unit on.
8. Once powered up, fire the unit and check all fittings for leaks.

### Instruction 5



### Instruction 6



### **Please note:**

**If your unit has previously had the copper upgrade, but it is not the multi-joint version, it is not necessary to upgrade to the latest version.**

**This latest version allows the cleaning of the hose-tail, as per instruction 35011503 instructions Jet cleaning 24/7 & Magnum Hazer.**