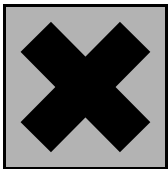


Inground 200 epoxy sealant kit instruction note

As stated in the Inground 200 Installation Guide, the installer must ensure sufficient drainage so that there is no risk of flooding in the installation well used. The Inground 200 epoxy sealant kit allows the installer to make the connections compartments in the base of the luminaire perfectly waterproof, eliminating any risk of water entry if the drainage requirements stated in the manual are not met.

Important! The sealant kit sets permanently, making it impossible to replace or adjust the DMX and power cables that enter the luminaire via the base. Double-check cable types and lengths before applying the sealant!

Sealant safety information



Warning! Hazardous substances. Resin contains epoxy resin, bisphenol-A-diglycidylether and dibutyl phthalate. Hardener contains diethylentriamine. The resin and hardener present the following health hazards:

- Harmful if swallowed.
- May cause sensitization by skin contact.
- Irritating to eyes and skin.
- May cause burns.
- Harmful to aquatic organisms, may cause long-term adverse effects in the aquatic environment.

Keep away from sources of ignition. No smoking. Avoid contact with skin, eyes and clothing. Ensure adequate ventilation. Do not breathe vapors/dust. Wear suitable protective clothing, gloves and eye/face protection. Keep away from food, drink and animal feedstuffs. Store at room temperature in the original container. Keep containers tightly closed. Handle and open containers with care. Do not dispose of unused product in the natural environment.

If inhaled, move to fresh air. If symptoms persist, call a physician. In case of eye contact, rinse immediately with water for at least 15 minutes. Call a physician immediately. In case of skin contact, wash off immediately with soap and plenty of water, removing all contaminated clothes and shoes. If skin irritation persists, call a physician. In case of ingestion, immediately give plenty of water (if possible charcoal slurry). Do not induce vomiting. If a person vomits while lying on his back, place him in the recovery position. Show the physician this document.

Sealing the connections compartments

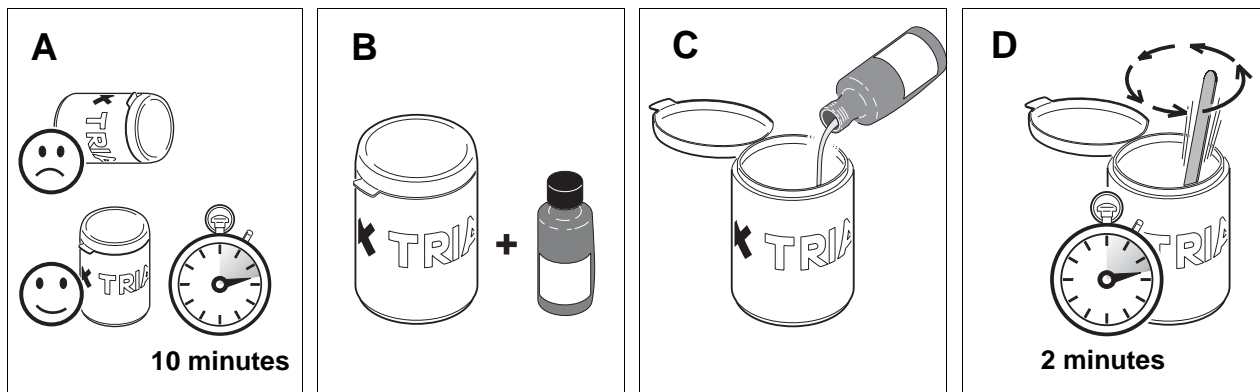
Warning! Ensure that supply cables cannot be connected to AC power during installation.

Read the safety information above before using the sealant. Wear protective gloves and safety goggles while handling sealant. Avoid contact with eyes and skin. Avoid inhaling vapors.

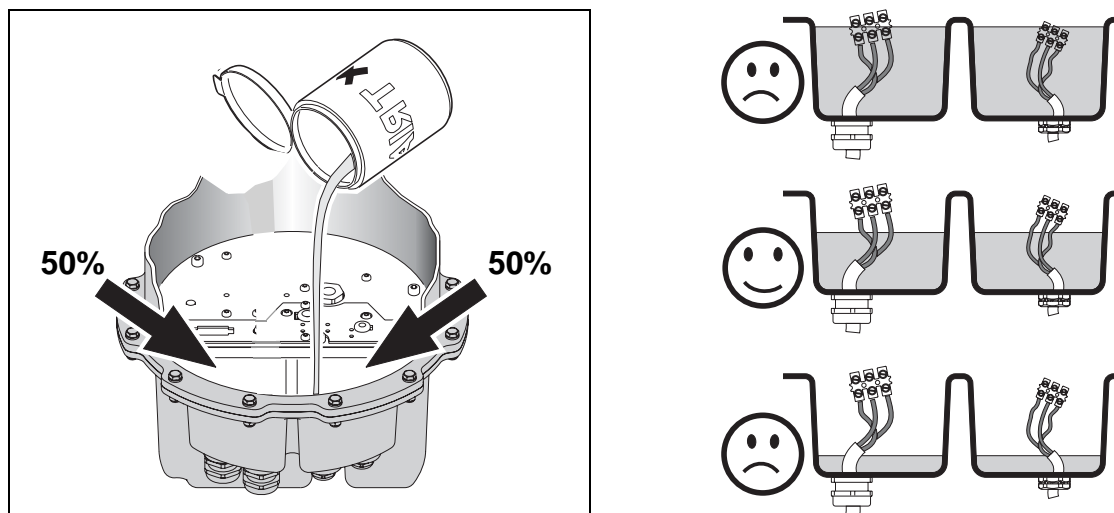
To seal the Inground 200 connections compartments:

1. First, stand the pot of Triapox[®] epoxy resin upright (see **A** below) and leave to stand for minimum 10 minutes.
2. Run all necessary power and data cables into the Inground 200, installing the cable glands supplied with the fixture as described in “Connecting power supply cables” on page 12 and “Control data cabling” on page 13 of the Installation Guide. Allow approximately 15 cm (6 inches) of cable to protrude into each connections compartment.

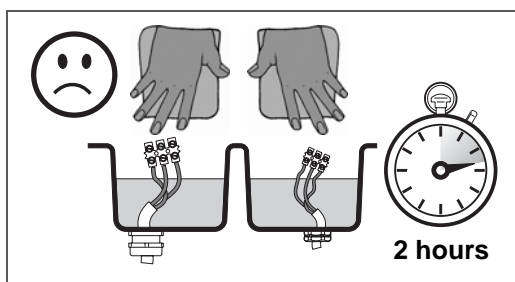
- Working inside the connections compartments, strip away approximately 12 cm (5 inches) of the outer cable jacket and strip approximately 1 cm (1/2 inch) of insulation from each conductor. Connect terminal blocks to the conductors.



- See illustrations above. Put on the protective gloves supplied with the sealant kit and a pair of safety glasses. Open the containers, pour the hardener into the epoxy resin and mix thoroughly for approximately 2 minutes. The mixture will now begin to harden, and must be used within 5 minutes.
- See illustrations below. Pour half of the sealant mix into the data connections compartment and half into the power connections compartment. Cover the end of the outer cable jacket and the first 2 cm (1/2 inch) of the conductors with sealant, but do not get sealant onto the terminal blocks or the ends of the conductors.



- Allow sealant to harden undisturbed for minimum 2 hours before replacing the compartment covers and continuing installation work.



Sealant kit instruction note: p/n 35000574
©Martin Architectural 2006