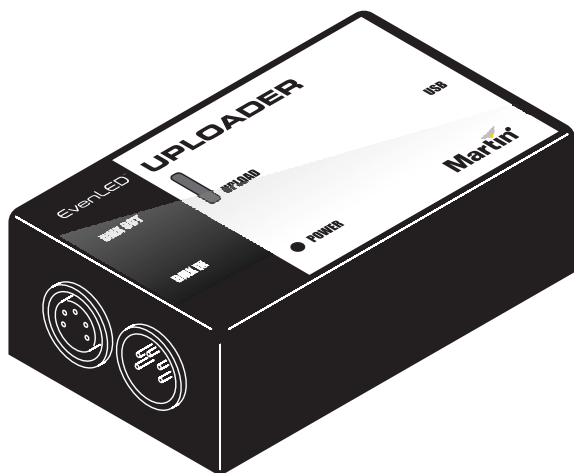


# EvenLED™

# Software Uploader

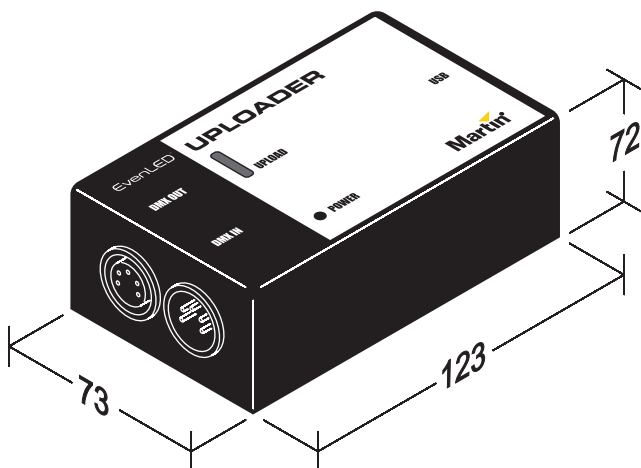
## User manual



**Martin**®

# Dimensions

All dimensions are in millimeters



---

©2009 Martin Professional A/S. Information subject to change without notice. Martin Professional A/S and all affiliated companies disclaim liability for any injury, damage, direct or indirect loss, consequential or economic loss or any other loss occasioned by the use of, inability to use or reliance on the information contained in this manual. The Martin logo, the Martin name and all other trademarks in this document pertaining to services or products by Martin Professional A/S or its affiliates and subsidiaries are trademarks owned or licensed by Martin Professional A/S or its affiliates or subsidiaries.

P/N 35000224, Rev. A

---

# Contents

<b>Introduction</b> .....	4
Unpacking .....	4
<b>Installing the Uploader</b> .....	4
Installing the USB driver .....	5
Installing the Uploader's Windows Application .....	6
<b>Preparing the Uploader</b> .....	7
<b>Updating EvenLED panel software</b> .....	9
Software version display .....	10
Software version display: example .....	10
<b>Service</b> .....	11
<b>Troubleshooting</b> .....	11
Warnings and messages .....	11
USB driver missing .....	11
Microsoft .NET Framework 2.0 maintenance mode .....	12
Later version of Microsoft .NET Framework installed .....	12
Unverified publisher warning .....	13
Troubleshooting software uploads .....	13
<b>Specifications</b> .....	14

# Introduction

The EvenLED Software Uploader™ from Martin Professional™ is a compact USB-powered data storage and transmission device for use in Martin EvenLED™ installations. It allows you to upload software (firmware) to EvenLED panels via the DMX data link.

The user documentation (including the most recent version of this manual) for all Martin EvenLED products is available for download free of charge from the Martin website at [www.martin.com](http://www.martin.com)

If you have questions about how to operate any product in a Martin EvenLED installation safely, please contact your Martin supplier or call the Martin 24-hour service hotline on +45 8740 0000, or in the USA on 1-888-tech-180.

There are no user-serviceable parts inside the product. Do not remove covers or attempt to repair a faulty product. Refer all service to a service technician authorized by Martin.

## Unpacking

A USB cable is supplied with the EvenLED Software Uploader.

# Installing the Uploader

**Important!** Install the EvenLED Software Uploader's USB driver **BEFORE** connecting the Uploader to your PC.

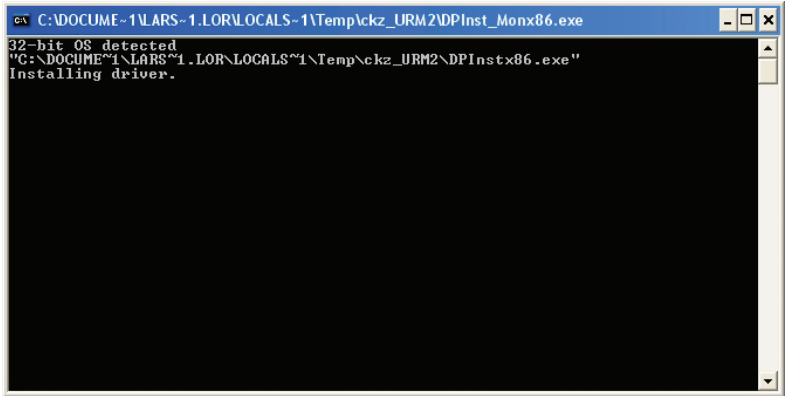
Before using the EvenLED Software Uploader, you must download the following files from the Product Support pages for the EvenLED Software Uploader at [www.martin.com](http://www.martin.com) (a Windows PC with an Internet connection is required for this):

- A **.zip** file containing three folders:
  - **USB Driver**
  - **Dot NET Framework 2.0**
  - **Software Uploader Installation** (followed by the version number)
- A **.hex** file containing the most recent version of the EvenLED panel software (firmware).

## Installing the USB driver

You must install the USB driver BEFORE you connect the EvenLED Software Uploader to your PC. To install this driver:

1. Run the **.exe** file in the **USB Driver** folder. You will see a window like the one in Figure 1 for a few seconds. When the window closes, the driver is installed.



**Figure 1: USB Driver installation window**

2. Connect the EvenLED Software Uploader to the PC using the supplied USB cable.
3. Windows will indicate that it has found new hardware (see Figure 2).



**Figure 2: 'Found New Hardware' message**

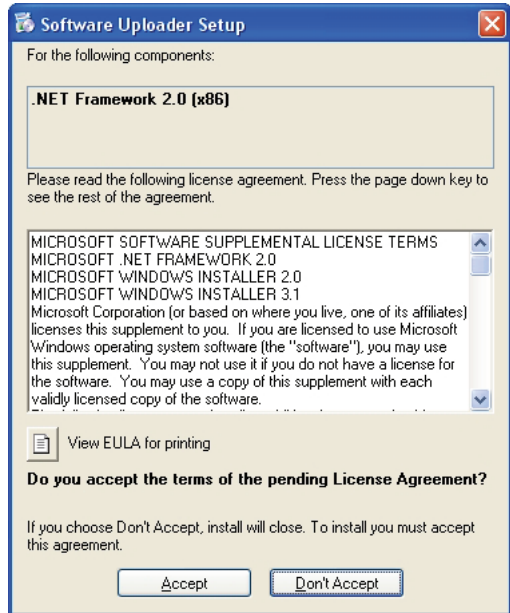
## Installing the Uploader's Windows Application

The EvenLED Software Uploader is managed and loaded with EvenLED panel software from within the Uploader's Windows application that you must now install.

To install the EvenLED Software Uploader's Windows application:

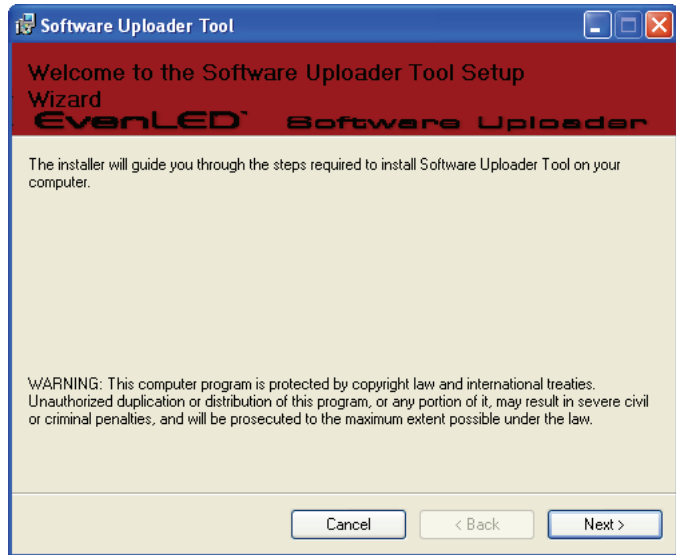
1. Run **setup.exe** in the **Software Uploader Installation** folder you unzipped.
2. See Figure 3. If you do not have Microsoft .NET Framework installed on your PC, you will now be prompted to accept the EULA and install this software framework.

*If you have an Internet connection, you can download and install the latest version of .NET from Microsoft's website if you prefer. You can also install .NET Framework version 2.0 at any time by running the **dotnetfx.exe** file in the **Dot NET Framework 2.0** folder you unzipped.*



**Figure 3: .NET 2.0 installation prompt**

3. Once .NET has installed, the EvenLED Software Uploader installation setup wizard welcome window appears (see Figure 4).



**Figure 4: Setup wizard welcome window**

4. Click on **Next >**. Choose a location to save the program files and follow the on-screen instructions until the installation is complete.

The Uploader's Windows application will launch automatically (see Figure 5). The EvenLED Software Uploader – and any other compatible devices correctly connected to the PC – will occupy a COM port. Occupied ports will be listed in the Com Port Selection window.

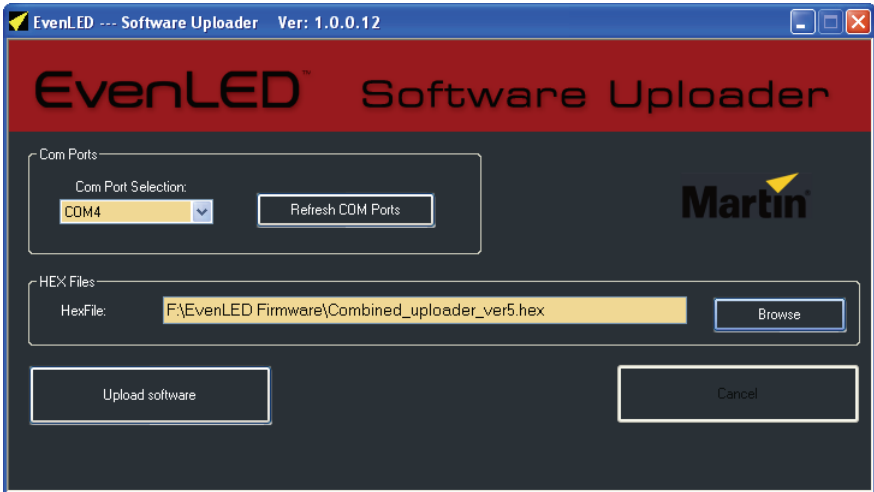
## Preparing the Uploader

Before you can update EvenLED panels with new software, you must load a panel software **.hex** file into the EvenLED Software Uploader. The latest and any previously released panel software files are available free of charge from the EvenLED Product Support page on [www.martin.com](http://www.martin.com)

To prepare the EvenLED Software Uploader:

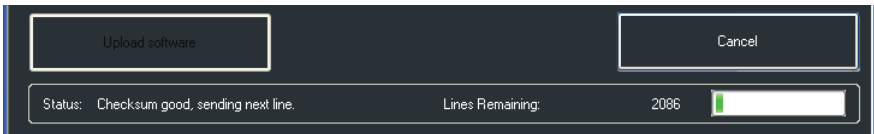
1. Download the EvenLED panel **.hex** file from [www.martin.com](http://www.martin.com) and save the file locally.

2. See Figure 5. Browse to and select this .hex file.



**Figure 5: EvenLED Software Uploader window**

3. Click on the **Refresh COM Ports** button.
4. Click on the **Upload software** button to load the panel software into the EvenLED Software Uploader. See Figure 6. A progress box at the bottom of the window indicates how many lines of code remain to be loaded.

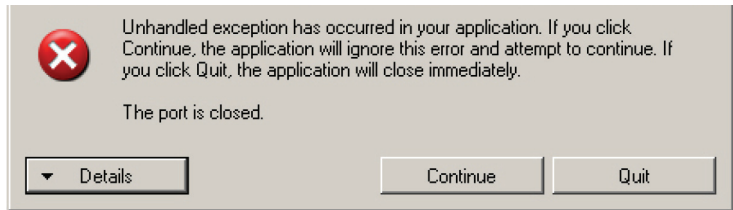


**Figure 6: EvenLED Software Uploader window**

5. After you have clicked on the **Upload software** button, if the Status line in the progress box in Figure 6 sticks at the line **Looking for Bootloader Active Character**, or if you see the failure message in Figure 7, the load has failed. The reason is almost certainly that the COM port visible in the **Com Port Selection** box is occupied by another device (such as a Martin Universal USB/DMX Interface™ or an ENTTEC DMX dongle). There is no way of knowing which devices COM ports are allocated to, so you must now stop the procedure and try again using a different COM port:



- If the Status line in the progress box is stuck, click on **Cancel** and then **OK** to confirm, disconnect the USB cable for a few seconds and reconnect it, then click on the **Refresh COM Ports** button.
- If you see the failure message in Figure 7, click on **Quit** and restart the EvenLED Windows application.



**Figure 7: COM port failure message**

6. Select a new COM port to try in the **Com Port Selection** box, click on the **Refresh COM Ports** button and try again to load the EvenLED panel software into the EvenLED Software Uploader as described above.
7. When the EvenLED panel software has been loaded into the EvenLED Software Uploader, a message will appear saying that the process has been completed. Click on **OK**.
8. Check that the red **Upload** LEDs on the EvenLED Software Uploader are running a chase sequence. The EvenLED Software Uploader is now trying to send the EvenLED panel software and will do so each time you connect its USB cable.

## Updating EvenLED panel software

You can connect the EvenLED Software Uploader at any point on the DMX link using its 5-pin XLR **DMX OUT** connector. The Uploader will update the software in all the EvenLED panels it is connected to.

If you only want to update the software in one panel, connect the Uploader to that panel and disconnect that panel from any other panels on the link.

To update the software in one or more EvenLED panels:

1. Check that the EvenLED Software Uploader is connected to a PC using the supplied USB cable, so that it draws power via USB.
2. Shut down power to the EvenLED panels.
3. Connect the Uploader to the first EvenLED panel using a DMX cable from the Uploader's **DMX OUT** to the panel's **DMX IN**.

4. Apply power to the EvenLED panels. All panels that are powered on and connected on a DMX link will now receive the panel software from the Uploader. No panel LEDs light while the panel software is being updated.
5. When the panel software update is complete, each EvenLED panel will flash all its green diodes 10 times and then display its mode settings and software version in an alternating sequence. The software version is displayed as a binary number (see “Software version display” below).
6. Disconnect the DMX cable.
7. Shut down power to the panels and then reapply power.

## Software version display

EvenLED Software

Uploader panels display their software version as a binary number on their LEDs. See Figure 8.

The top row of LEDs shows the tens and the second row down shows the units (ones) in the version number. The bottom two rows simply repeat the number displayed on the top two rows.

80	40	20	10	10s	} Repeat of first two rows
8	4	2	1	1s	
80	40	20	10	10s	
8	4	2	1	1s	

**Figure 8: Software version display**

### Software version display: example

See Figure 9. If a panel is running software version 29:

- 20 (LED 15) lights in the top row
- 1 and 8 (LEDs 9 and 12) light in the second row down
- $20 + (1 + 8) = 29$
- The bottom two rows repeat the number displayed on the top two rows.

80	40	20	10	10s	} Repeat of first two rows
8	4	2	1	1s	
80	40	20	10	10s	
8	4	2	1	1s	

**Figure 9: Software version 29**

# Service

There are no user-serviceable parts in the EvenLED Software Uploader. Service and repairs must be carried out by a service technician authorized by Martin.

To clean the EvenLED Software Uploader, use a soft cloth slightly dampened with a solution of water and detergent. Do not use solvents or abrasives. Do not allow the EvenLED Software Uploader to come into contact with water.

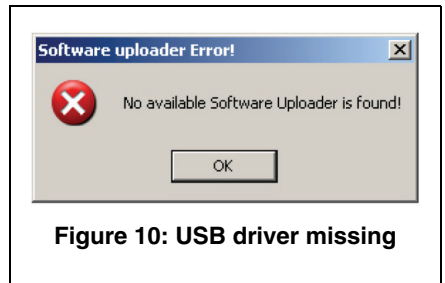
## Troubleshooting

### Warnings and messages

Here are some of the warnings and messages you may see during installation with recommended solutions.

#### USB driver missing

If you see the message in Figure 10 after installing the Uploader's Windows application, you have either not connected the Uploader or not installed the USB driver. Connect the Uploader. If necessary, install the driver as described in "*Installing the USB driver*" on page 5.



**Figure 10: USB driver missing**

## Microsoft .NET Framework 2.0 maintenance mode

If you see the message in Figure 11 during installation of Microsoft .NET Framework 2.0, then .NET 2.0 is already installed on your PC. Click on **Cancel**, confirm and then continue installing the Uploader Windows application.

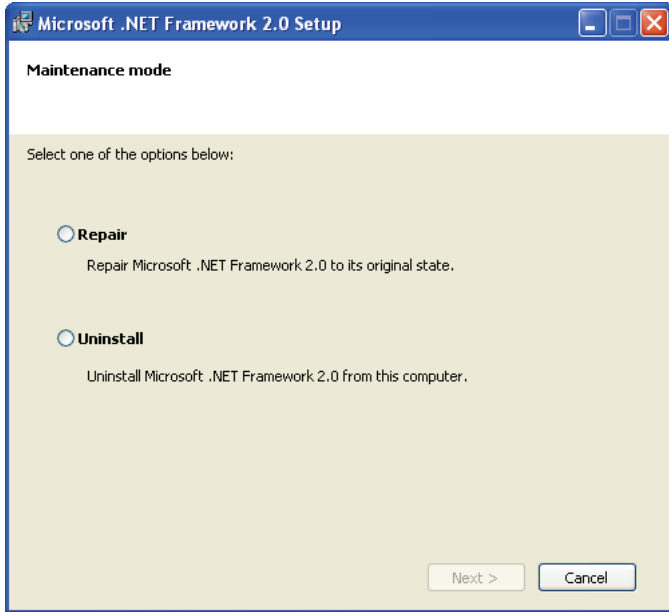


Figure 11: .NET Framework maintenance mode

## Later version of Microsoft .NET Framework installed

If you see the message in Figure 12 during installation of Microsoft .NET Framework 2.0, a later version of .NET is already installed on your PC. The Uploader Windows application will run without problem on later versions of .NET than version 2.0. Click on **OK** and continue installing the Uploader Windows application.

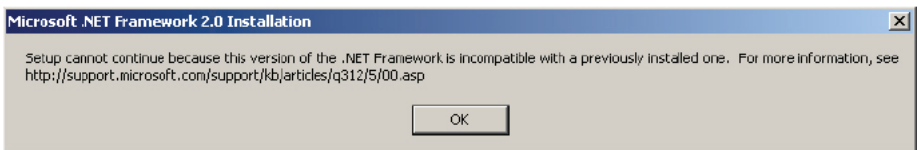


Figure 12: .NET Framework incompatible

## Unverified publisher warning

If you see a warning message similar to Figure 13 during installation you can safely ignore it. Click on **Install** to proceed.



Figure 13: Unverified publisher warning

## Troubleshooting software uploads

Problem	Probable cause(s)	Suggested remedy
No response from Uploader	Uploader not connected via USB	Connect to PC using supplied USB cable
Panel fails to accept new software	Upload procedure not followed correctly	Review software upload procedure instructions and repeat procedure.
	Data corrupted during transmission	Repeat software upload procedure. If problem persists, check that DMX link is not suffering interference (from 'noisy' power cables or devices for example)
	Fault in cable or connections	Check for faults or bad connections
	Faulty device	Have faulty device serviced.

# Specifications

## Physical

Height .....	72 mm (2.9 in.)
Length .....	123 mm (4.9 in.)
Width .....	73 mm (2.9 in.)
Weight .....	400 g (14.1 oz.)
Construction .....	Steel

## Installation

Minimum ambient temperature .....	5° C (41° F)
Maximum ambient temperature .....	40° C (104° F)

## Connections

DMX in/out .....	5-pin locking XLR
PC .....	USB

## Software requirements

Required OS .....	Windows XP
-------------------	------------

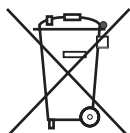
## Included items

USB cable	
EvenLED™ Software Uploader user manual .....	P/N 35000225

## Ordering information

EvenLED™ Software Uploader .....	P/N 90758097
----------------------------------	--------------

*Specifications subject to change without notice*



## Disposing of this product

Martin products are supplied in compliance with Directive 2002/96/EC of the European Parliament and of the Council of the European Union on WEEE (Waste Electrical and Electronic Equipment), as amended by Directive 2003/108/EC, where applicable.

Help preserve the environment! Ensure that this product is recycled at the end of its life. Your supplier can give details of local arrangements for the disposal of Martin products.

---



**Martin**<sup>®</sup>

---

www.martin.com • Olof Palmes Allé 18 • 8200 Aarhus N • Denmark  
Tel: +45 8740 0000 • Fax +45 8740 0010