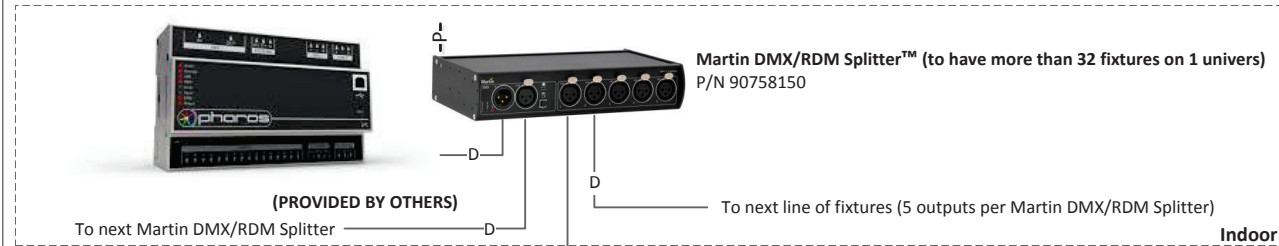


GENERIC SYSTEM DIAGRAM – EXTERIOR PROJECTION SERIES

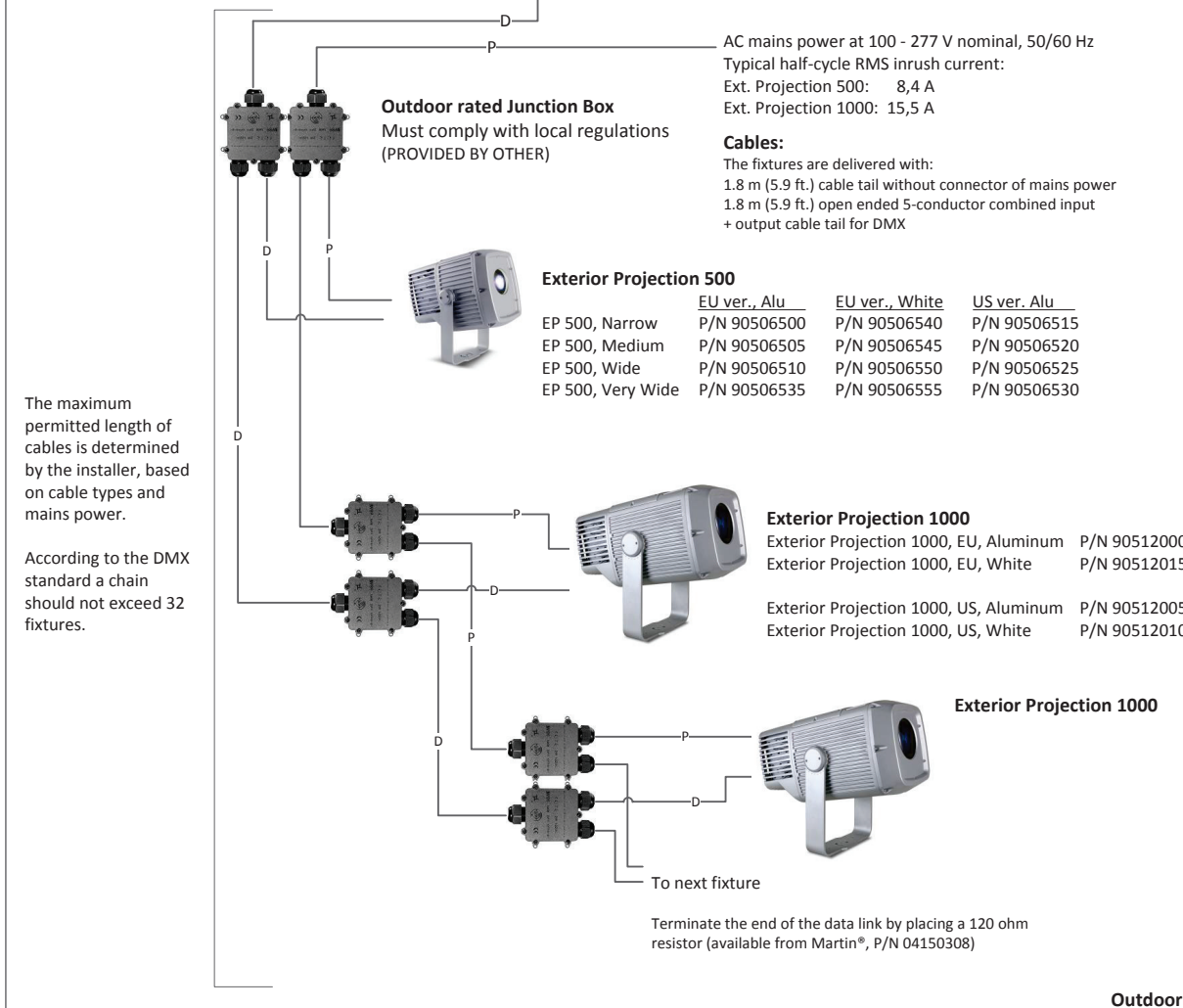
DMX Source



DMX Channels

	Channels	Fixtures/Univers
Ext. Projection 1000	20 ch	25 pcs
Ext. Projection 500	13 ch	39 pcs

Exterior Projection Series generic layout



The maximum permitted length of cables is determined by the installer, based on cable types and mains power.

According to the DMX standard a chain should not exceed 32 fixtures.

Power and data connector

Power conductors:

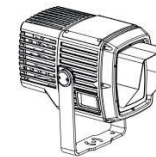
	Live or L	Neutral or N	Earth or Ground
US variant	Black	White	Green
EU variant	Brown	Blue	Yellow/green

Data conductors:

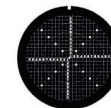
Wires:	Shield	Input pair (green tube)		Output pair (brown tube)	
Color:	Black	White	Green	White	Brown
Signal:	Common	DMX in +	DMX in -	DMX out +	DMX out -
Male XLR pin:	Pin 1	Pin 3	Pin 2	-	-
Female XLR pin:	Pin 1	-	-	Pin 3	Pin 2

Accessories:

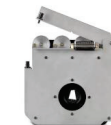
	EP 500	EP 1000
Glare Shield, Alu, Exterior Projection	P/N 91611767	P/N 91611768
Projection Setup Gobo	P/N 91616068	P/N 91616075
EP-500, Manual Framing Module	P/N 91611842	-



Glare Shield, Alu, Exterior Projection



Projection Setup Gobo



EP-500, Manual Framing Module

CABLES:

D - DMX CABLE F - FIBER OPTIC CABLE (PROVIDED BY OTHERS) H - HYBRID CABLE (PROVIDED BY MARTIN) P - POWER CABLE