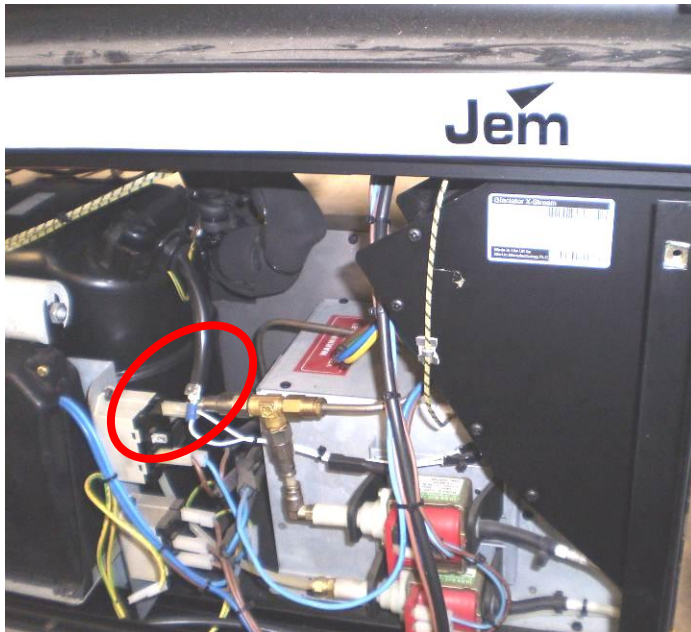


1. First, assemble Fuse Holder/Fuse Plate as shown by removing the silver nut, feeding the Fuse Holder into the fuse plate and finally securing with the silver nut.

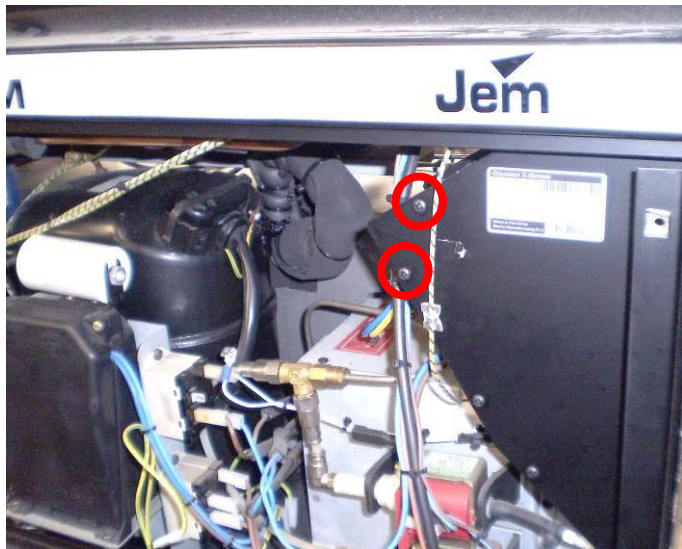


2. Now, using a pair of pliers, gently bend the rear spade as shown.

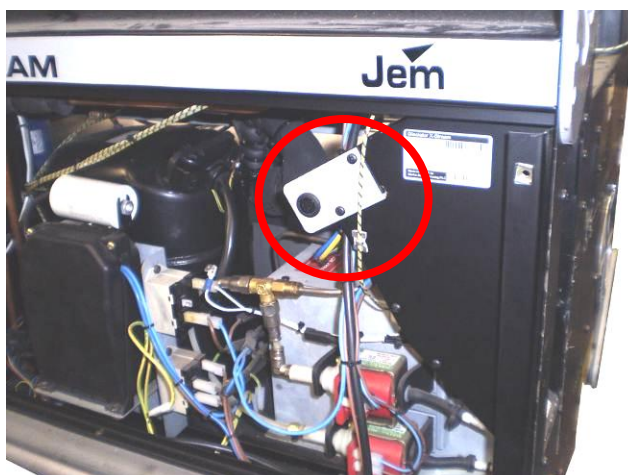


3. Before fitting the Fuse Plate assembly, you will first need to disconnect and remove the live (brown) heater wire from the upper spade of the relay that goes to the PCB. Remove the cable ties so that the wire can be fed through and disconnect from the 'piggy-back' crimp on the relay end.

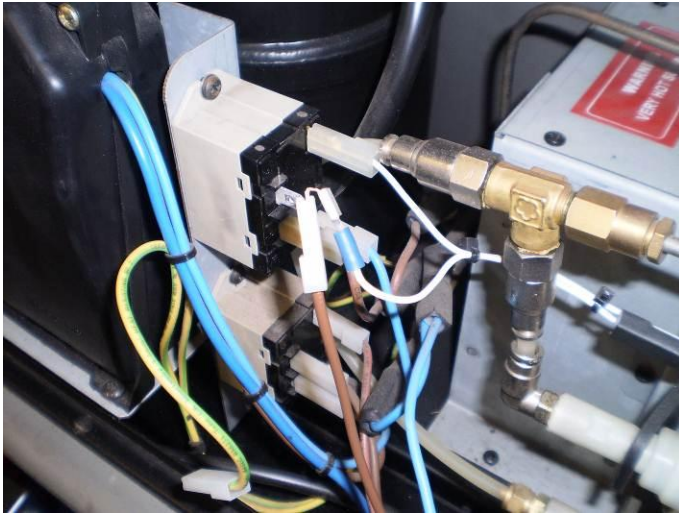
Now discard this wire as it is no longer required.



4. Now remove the two screws as shown left.



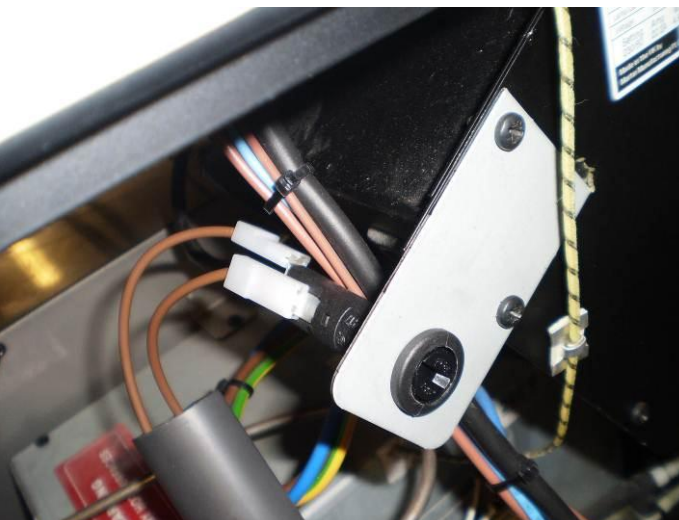
5. Fit the Fuse Plate assembly as shown using the 2 screws that were removed.



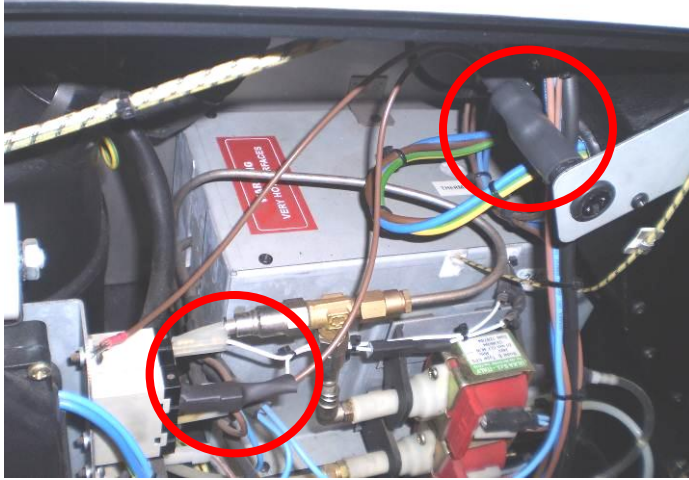
6. Connect Brown Wire 1 (with headers at both ends) to the piggy-back crimp and cover with the small piece of heat-shrink.



7. Feed through the large piece of heat-shrink and connect to the outer pin of the Fuse Holder as shown.



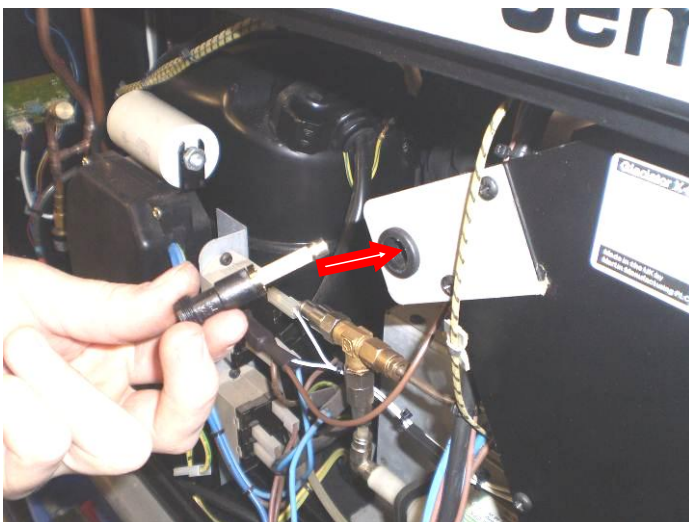
8. Connect the header of Brown Wire 2 (with red pin on end) to the top spade (which was bent in Step 2) on the Fuse Holder as shown and feed through the large piece of heat-shrink. Then feed the large piece of heat-shrink over the Fuse Holder.



9. Using a Heat Gun, shrink both pieces of heat-shrink.



10. Connect the red pin on the end of the Brown wire to the remaining hole on the distribution block as shown.



11. Insert fuse into Fuse Holder as shown.

Document name:

50303530 - HFG Fuse upgrade kit 230V



Document no.:

35011518

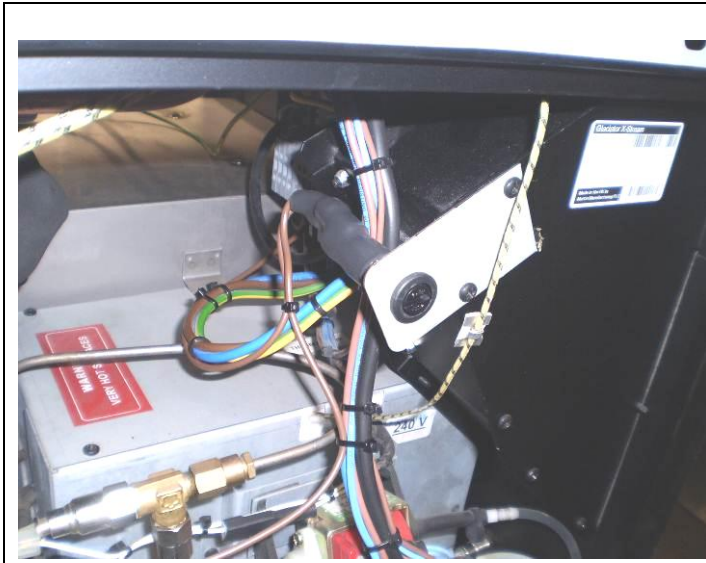
Rev:

A

Date made:

23/04/2012

Page 5 of 5



12. Finally, dress wires with cable ties.

Made by:

D.Smith

Approved:

DS

Approved:

DC

Date approved:

24-12-2012

Description:

First Release – 24-04-2012