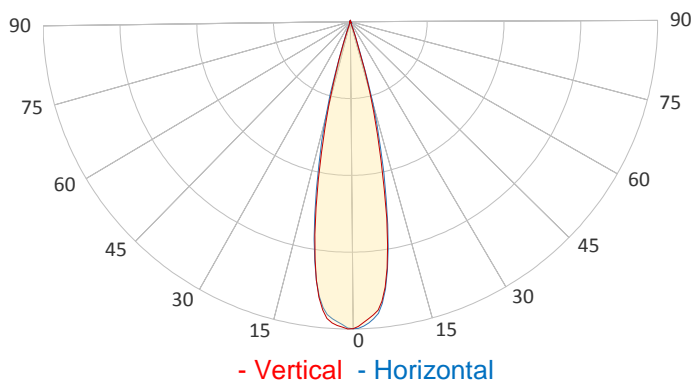
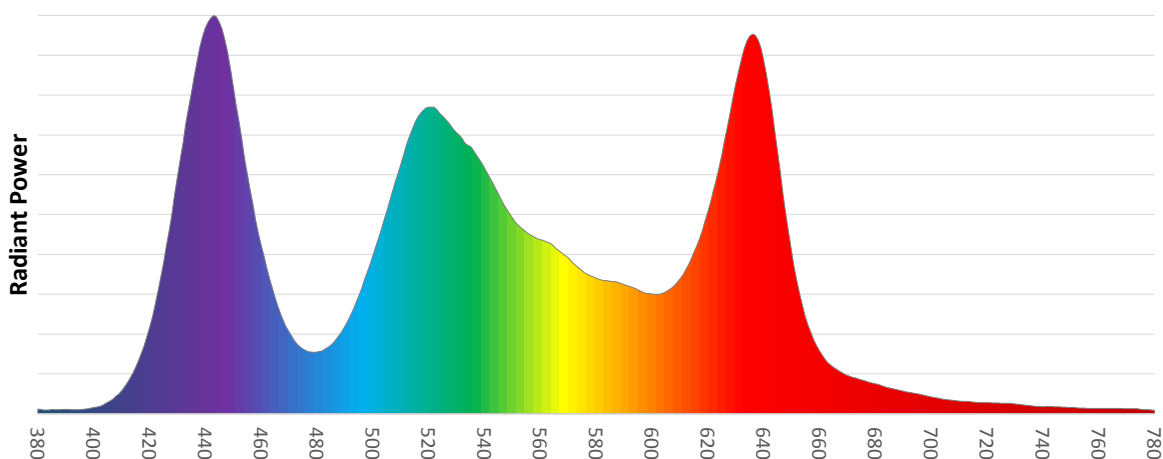


**General Specifications:****Total Fixture Output: 6 klm****Light Engine Output: 15 klm****Efficacy: 14 Lumen/Watt****Lens Option: N/A****Zoomrange: 12-36°****CRI: 80+****CQS: 85+****TM-30 Rf: 80+****TM-30 Rg: 105+****TLCI: 80+****Color Temperature: 6500 K**

## Measurement

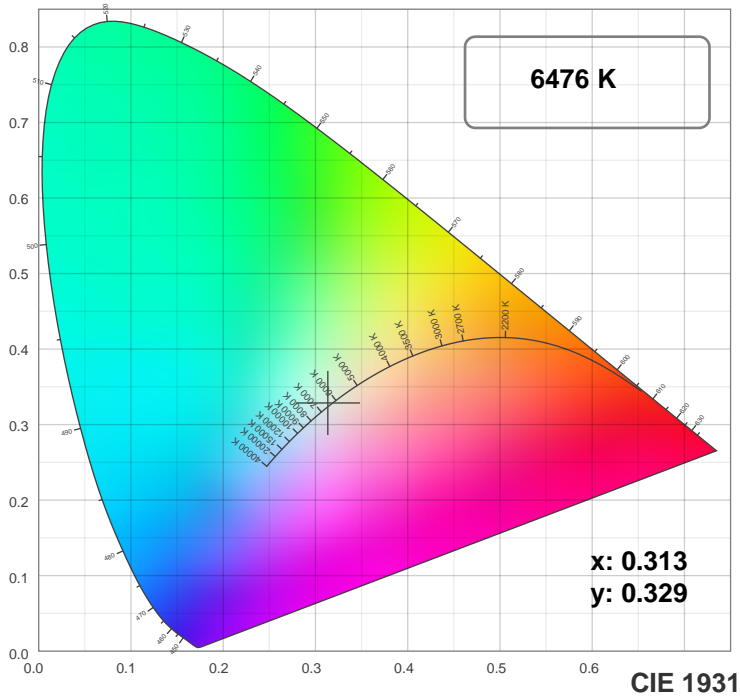
**Catalog Number: 90250025HU****Measured Output: 5956 lm****Measured Peak: 31472 cd****Consumed Power: 430 W****Efficacy: 13.9 Lumen/Watt****Beam Angle (50%): 24.4°****Field Angle (10%): 34.8°****Cutoff Angle (3%): 38.4°****Measurement Condition:****Ambient Temperature: 25 +/- 5C****AC Supply: 230V/50Hz**

Spectral distribution

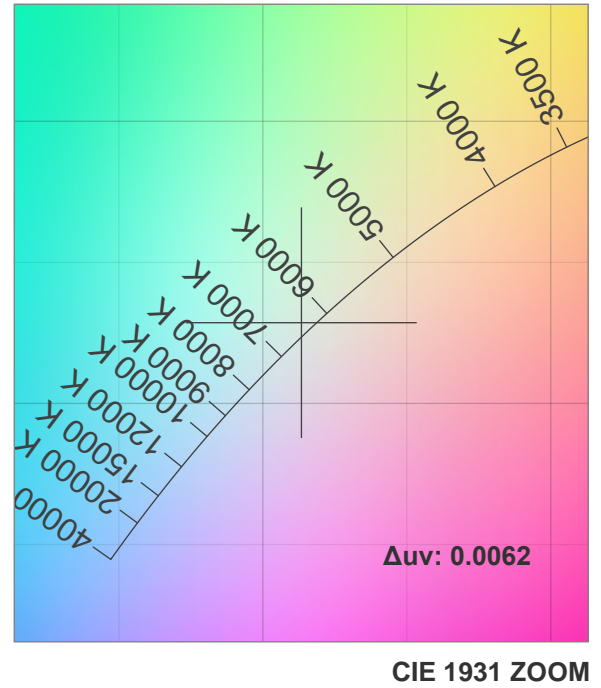


# Chromaticity

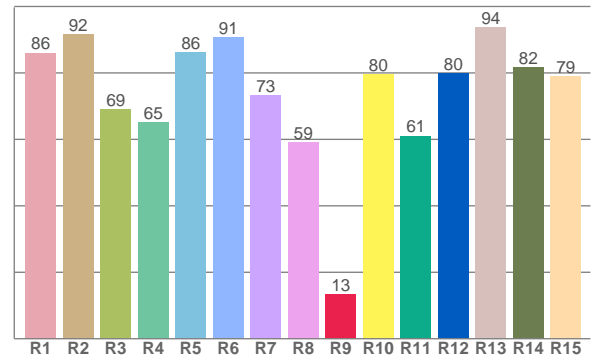
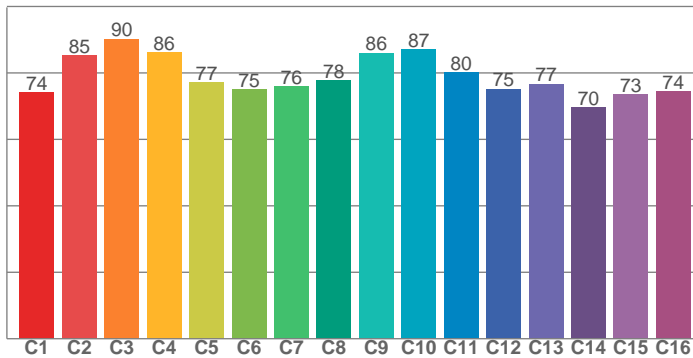
## MAC Allure Wash PC – Wide



TM30: 79.7



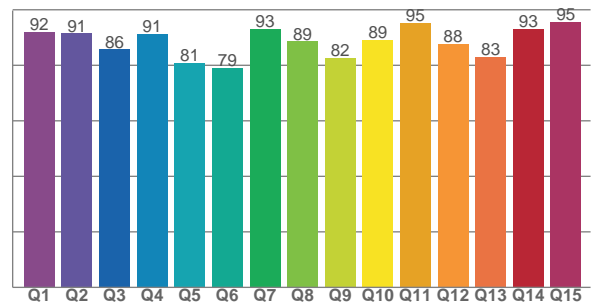
CRI: 77.6 (R1-R8)



### Color Parameters

Color Temperature	Color Rendering Index	Red Component	Color Fidelity	Color Gamut
CCT	CRI	CRI R9	TM30 Rf	TM30 Rg
6476 K	77.6	13.3	79.7	113.9

CQS: 87.5



Television Lighting Consistency Index	Color Quality Scale	Color Coordinate CIE 1931	Color Coordinate CIE 1931	Color Coordinate CIE 1964	Color Coordinate CIE 1964	Color Diviation from Black Body
TLCI	CQS	x	y	u	v	Δuv
80+	87.5	0.313	0.329	0.198	0.312	0.0062

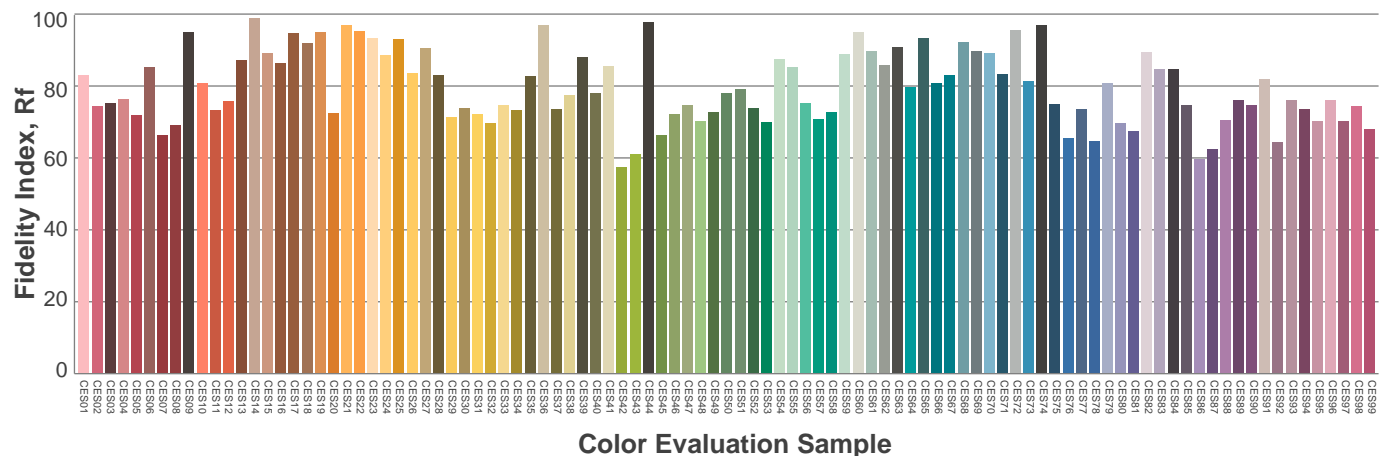
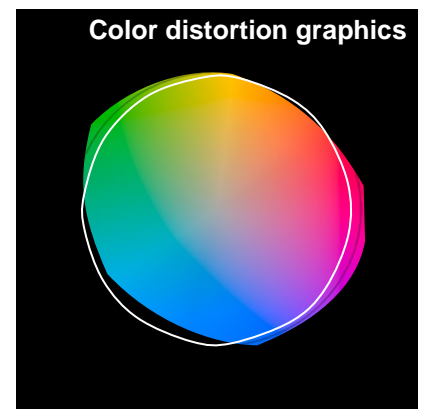
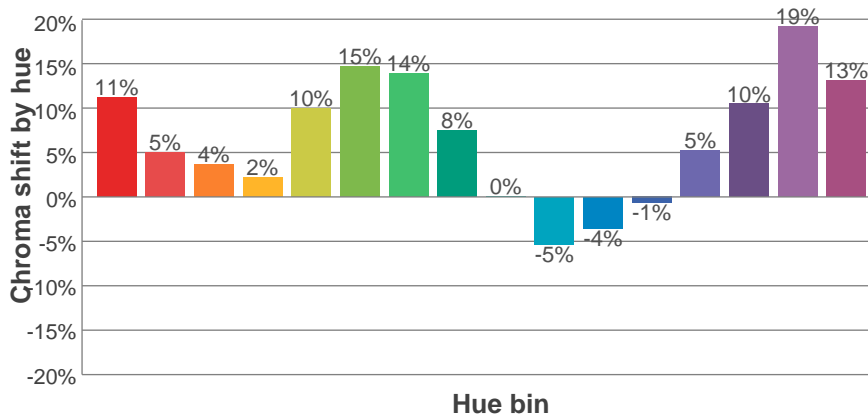
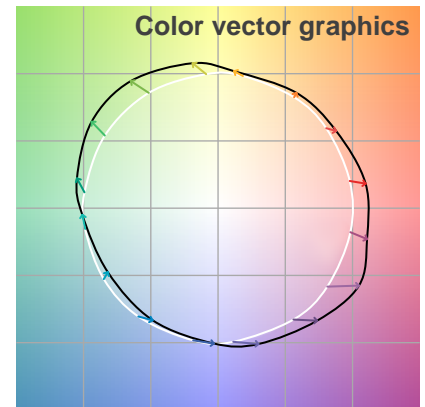
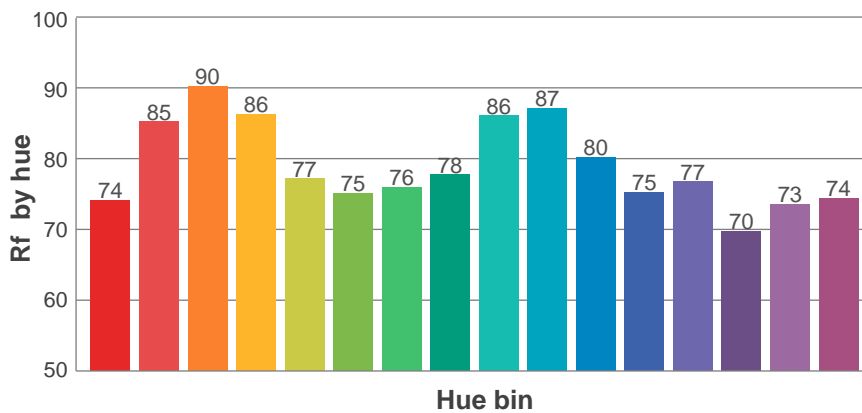
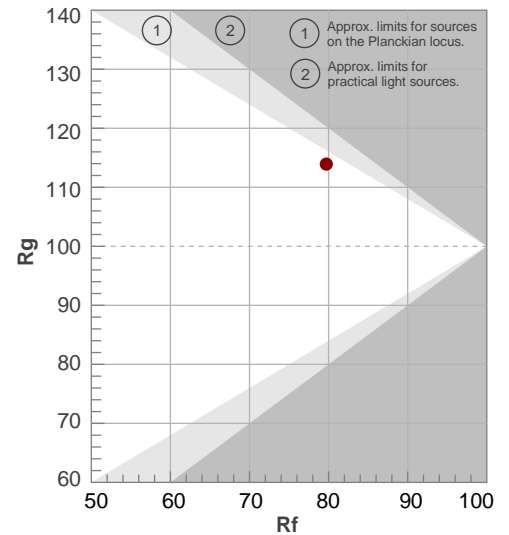
**Rf 79.7**

Fidelity index Rf

**Rg 113.9**

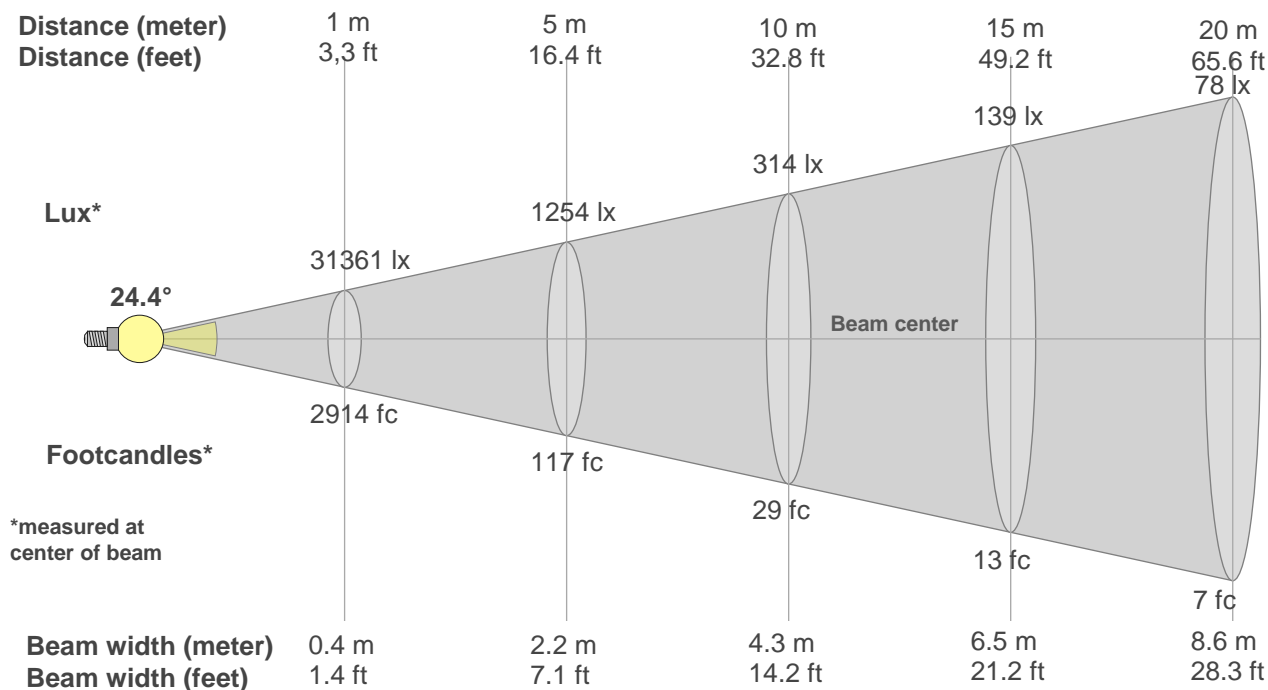
Gamut index Rg

Hue Bin	R <sub>f</sub>	Graphic shifts (%)	
		Chroma	Hue
1	74	11%	-4%
2	85	5%	-6%
3	90	4%	0%
4	86	2%	7%
5	77	10%	8%
6	75	15%	6%
7	76	14%	-3%
8	78	8%	-9%
9	86	0%	-11%
10	87	-5%	-3%
11	80	-4%	10%
12	75	-1%	16%
13	77	5%	18%
14	70	10%	14%
15	73	19%	14%
16	74	13%	-3%



# Beam Details

## MAC Allure Wash PC – Wide



Beam width:

Beam luminous intensity formula:

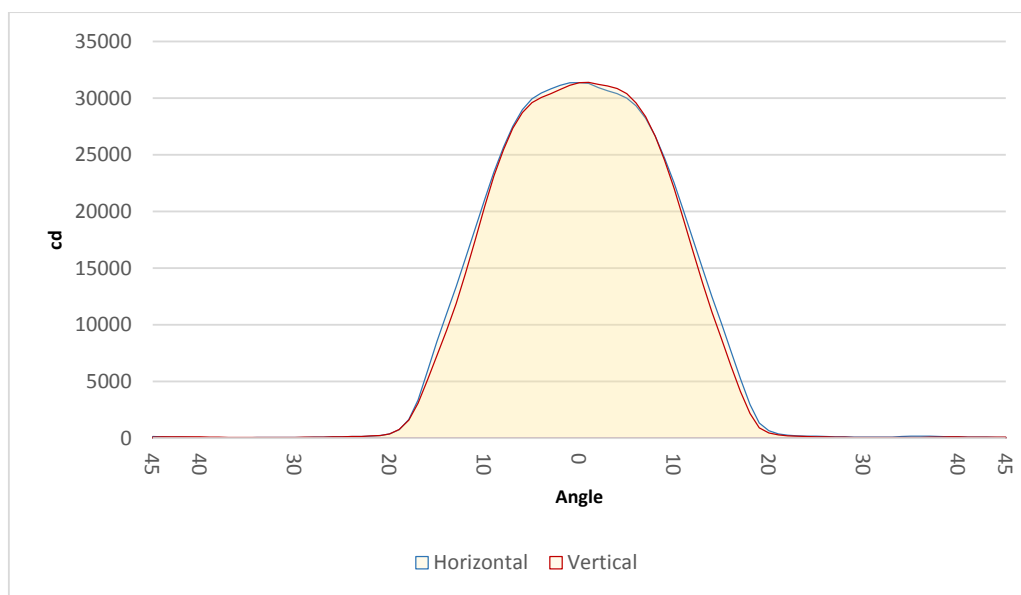
$$w = 0.4 * \text{distance}$$

$$\text{lux} = 31361 / (\text{distance}^2) \text{ (where distance is in meters)}$$

$$\text{fc} = 31361 / (\text{distance}^2) \text{ (where distance is in feet)}$$

### Beam illuminance from 1-20m

1m	2m	3m	4m	5m	6m	7m	8m	9m	10m	11m	12m	13m	14m	15m	16m	17m	18m	19m	20m
3.3ft	6.6ft	9.8ft	13.1ft	16.4ft	19.7ft	23ft	26.2ft	29.5ft	32.8ft	36.1ft	39.4ft	42.7ft	45.9ft	49.2ft	52.5ft	55.8ft	59.1ft	62.3ft	65.6ft
31361lx	7840lx	3485lx	1960lx	1254lx	871lx	640lx	490lx	387lx	314lx	259lx	218lx	186lx	160lx	139lx	123lx	109lx	97lx	87lx	78lx
2913.5fc	728.4fc	323.7fc	182.1fc	116.5fc	80.9fc	59.5fc	45.5fc	36fc	29.1fc	24.1fc	20.2fc	17.2fc	14.9fc	12.9fc	11.4fc	10.1fc	9fc	8.1fc	7.3fc



Beam angle 50%	Field angle 10%	Cutoff angle 3%
24.4°	34.8°	38.4°