

# P3-PC System Controller™

Installation Guide



**Martin®**

# Contents

- Introduction..... 3
- Installation of the software ..... 4
  - Installation P3-PC application..... 4
  - Installation of CodeMeter Runtime..... 6
  - Installation of Npcap..... 8
  - Installation of NDI Runtime ..... 9
- Configuration of network settings..... 12
  - Configuration of Windows IP address settings..... 12
  - Selection of network interface for communication with fixtures ..... 15
- P3-PC System Controller™ License ..... 16
- License Backup ..... 17
  - Online Backup..... 17
  - Local Backup ..... 17

# Introduction

These installation instructions explain how to install the P3-PC System Controller™ software on your computer.

The P3-PC System Controller™ software can be used to perform four different tasks:

- Offline Editor for the P3-050, P3-150, P3-175, P3-275 and P3-300 System Controllers; with transfer of the show files via a USB memory device.
- Technician Tool to address fixtures, update fixture firmware and run test patterns; with connection to the fixtures via the computer's network port.
- Stand-Alone P3 System Controller sending video to a setup containing up to 20 736 pixels; with video input via NDI or video captured from your desktop.
- Enable P3 output (up to 20 736 pixels) from a Hippotizer V4 (or newer) media server, by installing P3-PC onto the Media Server.

If you will be connecting your P3-PC System Controller™ to fixtures (when using as technician tool and/or stand-alone system controller), please also check the chapter explaining the configuration of network settings on your computer.

Please consult the P3 System Controller user group on Facebook. Here you can find more tips and tricks on using the P3 System Controllers.

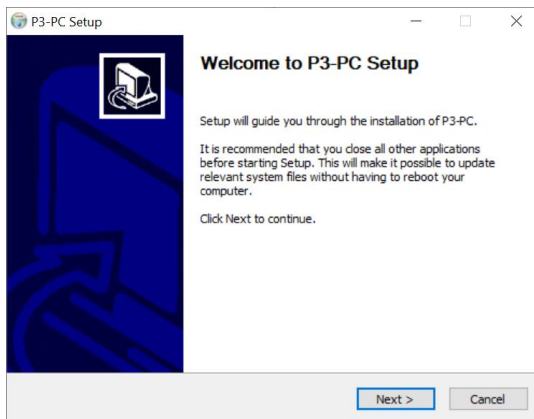
Please consult the P3 System Controller training videos on the Martin Training Site and YouTube. Here you can find training and walkthroughs guiding you through the essential tasks on a P3 System Controller.

# Installation of the software

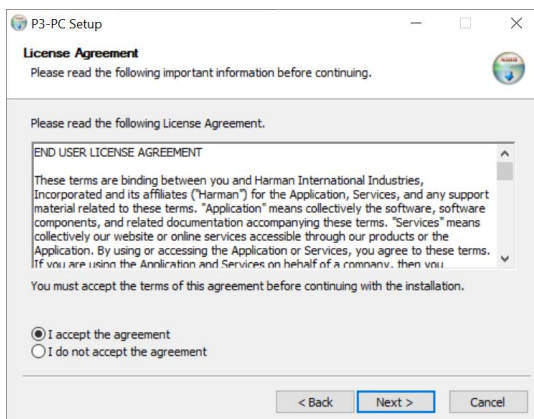
The P3-PC System Controller™ software can be downloaded free of charge from the Martin Professional website at [www.martin.com](http://www.martin.com).

## Installation P3-PC application

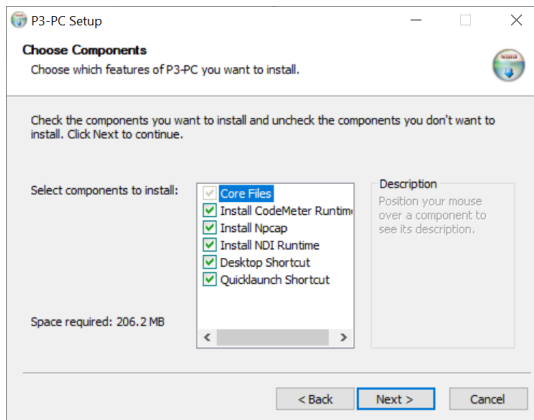
- 1) Double-Click on the downloaded executable to start the installation. The P3-PC Setup Wizard will appear. Click “Next”.



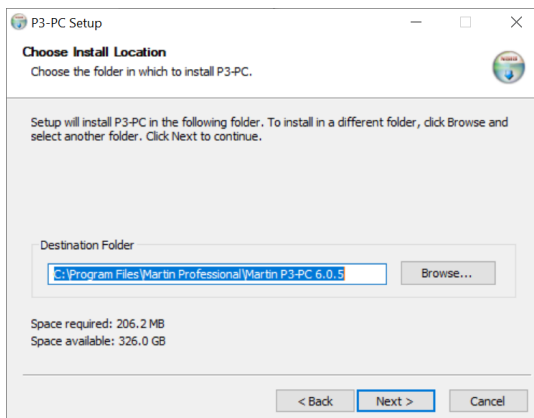
- 2) Please review the License Agreement, select “I accept the agreement” and click “Next”.



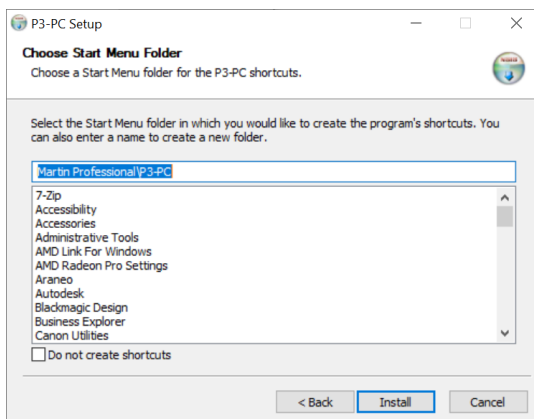
- 3) The following screen will show the components that will be installed. Desktop Shortcut and Quicklaunch Shortcut can be unchecked if desired, all other components are mandatory. Click “Next”.



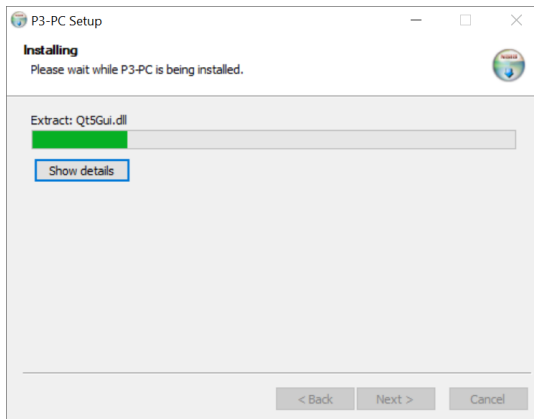
- 4) The next screen asks where you want to install the P3-PC application. Simply leave this set to the default location and click “Next”.



- 5) The next screen asks where you want to place the P3-PC shortcuts in the start menu. Also here it is advisable to leave this set to the default location and click “Next”.



6) Please be patient while the P3-PC application is being installed on your PC.

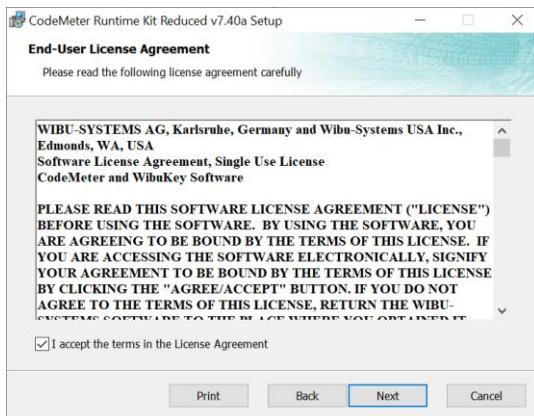


## Installation of CodeMeter Runtime

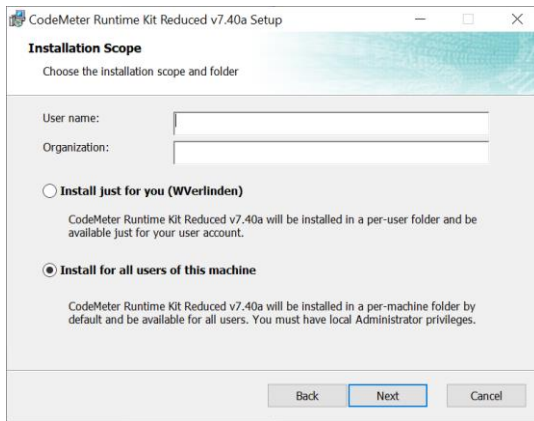
7) Now the CodeMeter Runtime Setup Wizard will appear. Click "Next".



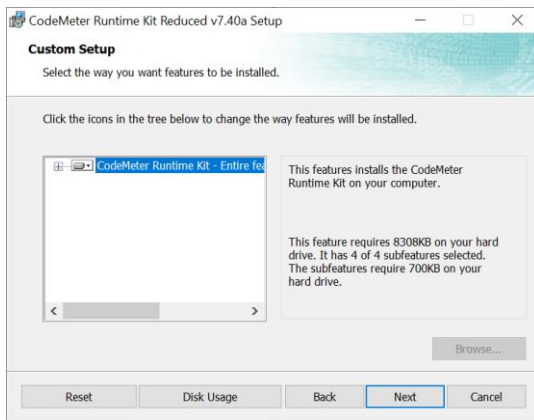
8) Please review the License Agreement, check "I accept..." and click "Next".



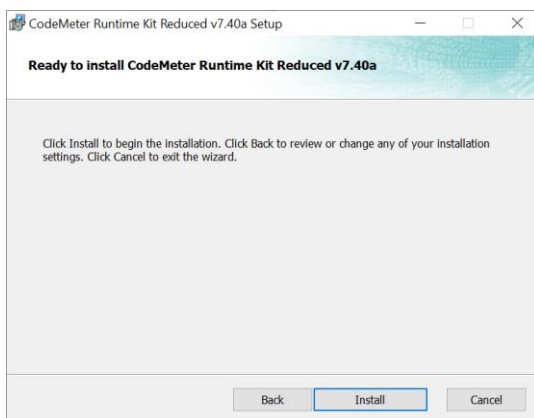
9) Enter the user information and click “Next”.



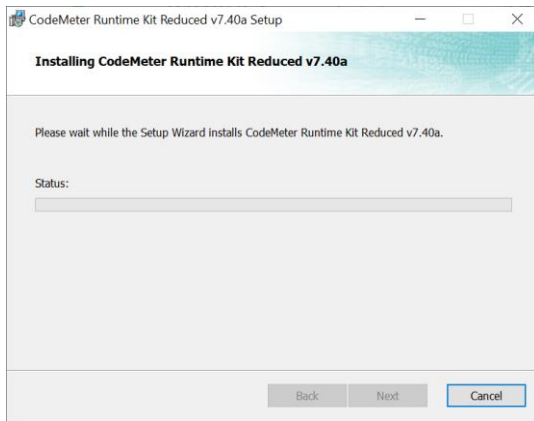
10) Click “Next”.



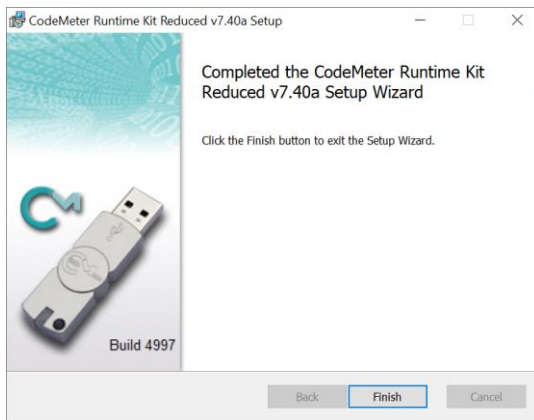
11) Click “Install” to start the installation of the CodeMeter Runtime.



12) Please be patient while the CodeMeter Runtime is being installed on your PC.

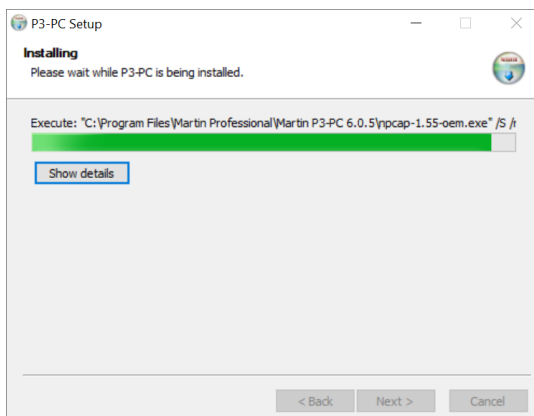


13) Once the installation of the CodeMeter Runtime is completed, click "Finish".



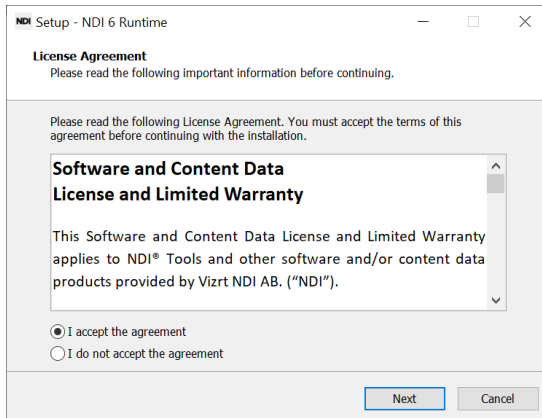
## Installation of Npcap

14) Now the Npcap network driver will be installed.

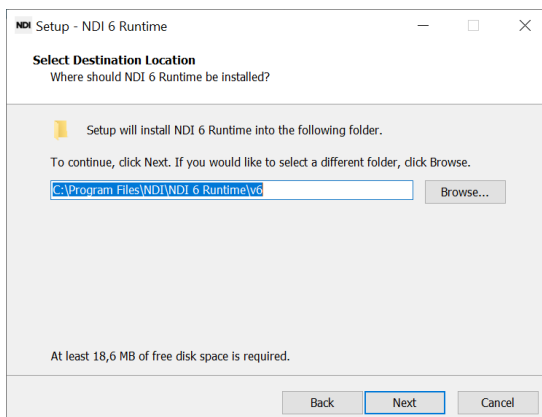


## Installation of NDI Runtime

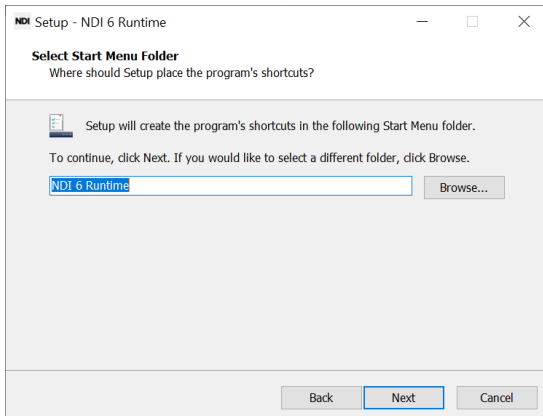
- 15) Now the NDI Runtime Setup Wizard will appear. Please review the License Agreement, check “I accept...” and click “Next”.



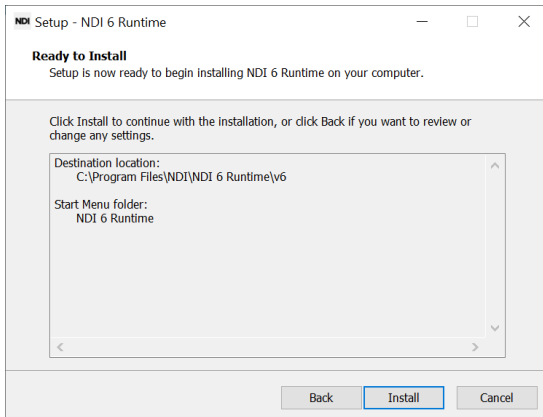
- 16) The next screen asks where you want to install the NDI Runtime. Simply leave this set to the default location and click “Next”.



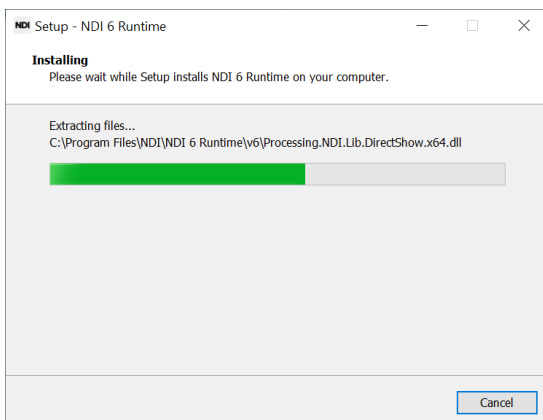
17) The next screen asks where you want to place the NDI Runtime shortcuts in the start menu. Also here it is advisable to leave this set to the default location and click “Next”.



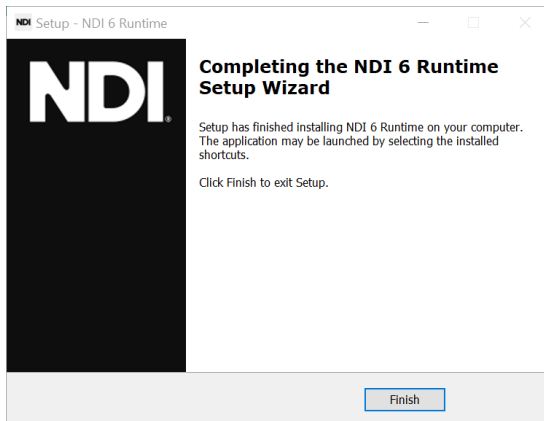
18) Review the installation details and click “Install”.



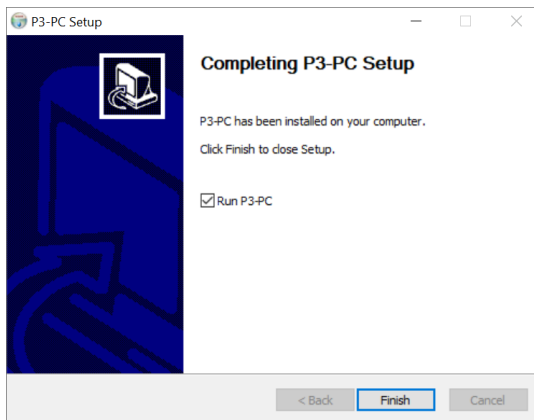
19) Please be patient while the NDI Runtime is being installed on your PC.



20) Once the installation of the NDI Runtime is completed, click “Finish”.



21) Now the installation of the P3-PC application is completed, click “Finish”.



# Configuration of network settings

If you will only be using the P3-PC System Controller™ as Offline Editor for the P3-050, P3-150, P3-175, P3-275 and P3-300 System Controllers (and not make a connection to fixtures with your computer), there is no need to execute the steps in this chapter.

## Configuration of Windows IP address settings

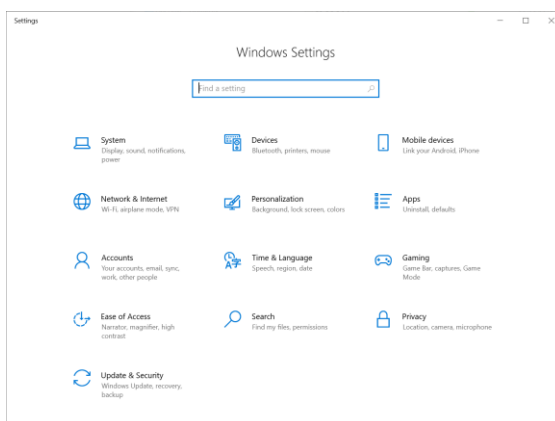
As the P3 Protocol that is used between Martin Professional P3 System Controllers and Martin P3 fixtures does not use any IP addressing at all (it uses MAC addressing), there is in theory no need to configure any specific IP address on your computer.

But in many cases Windows will continue to wait and search for an IP address if it does not have one, and block any other network traffic before that task is completed.

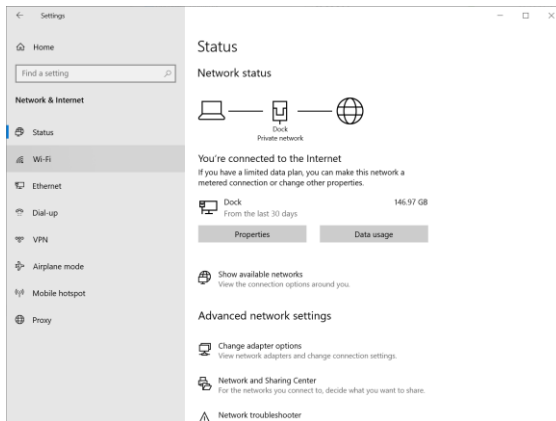
It is therefore advisable to configure a static IP address on the network port that you will be using to communicate with Martin P3 fixtures.

The guidelines below explain how to carry out this procedure on a computer running Windows 10. The procedure on other versions of Windows is similar.

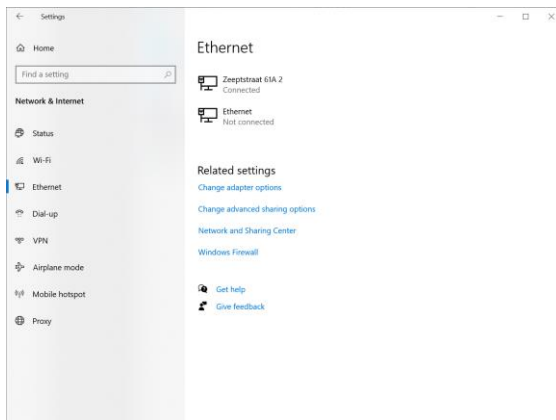
- 1) Navigate to Settings via the start menu, and select Network & Internet.



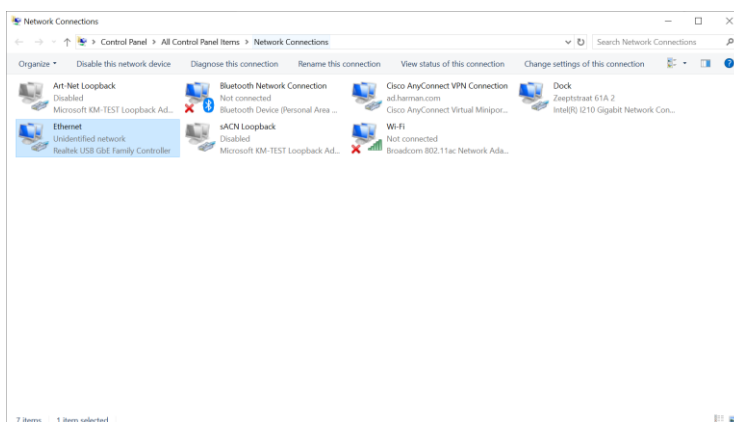
2) In Network & Internet, select “Ethernet” on the left.



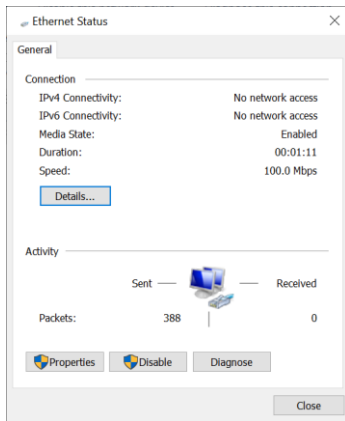
3) Now click “Change Adapter Options”.



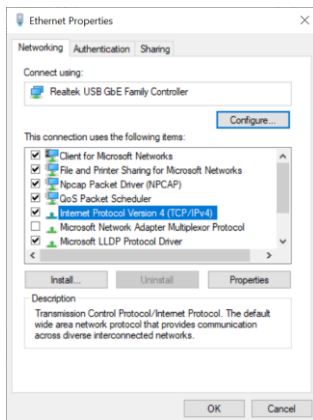
4) Double-click on the network port that you will be using to connect to your Martin P3 Fixtures.



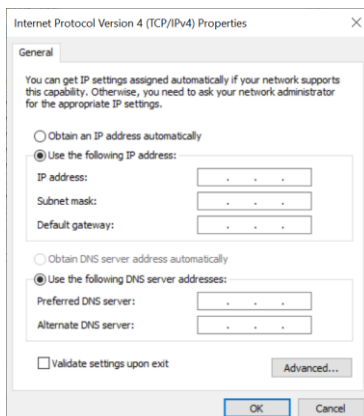
5) Click "Properties".



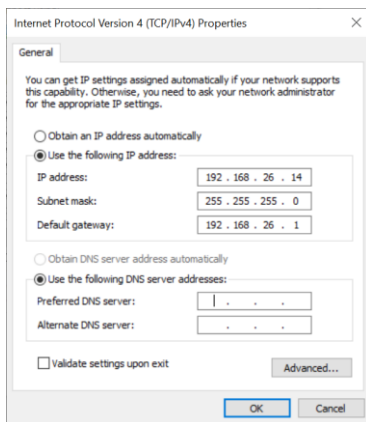
6) Select "Internet Protocol Version 4 (TCP/IPv4)" and click "Properties".



7) Check "Use the following IP address" to define a static IP address.

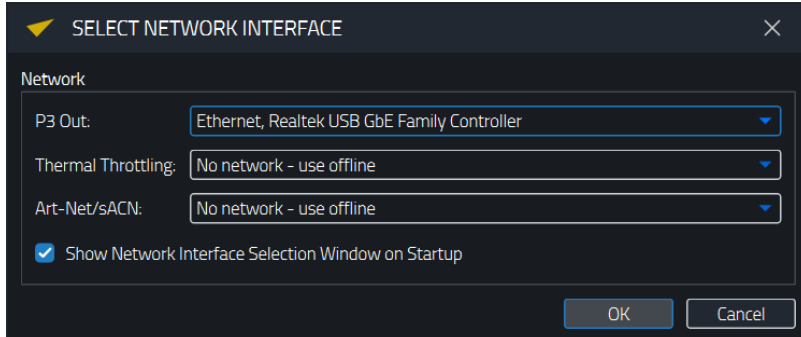


- 8) Enter an IP address, Subnet mask and Default gateway (the ones shown in the screenshot are just an example, as the actual addresses do not matter for P3 traffic). Click “OK” to apply these settings.

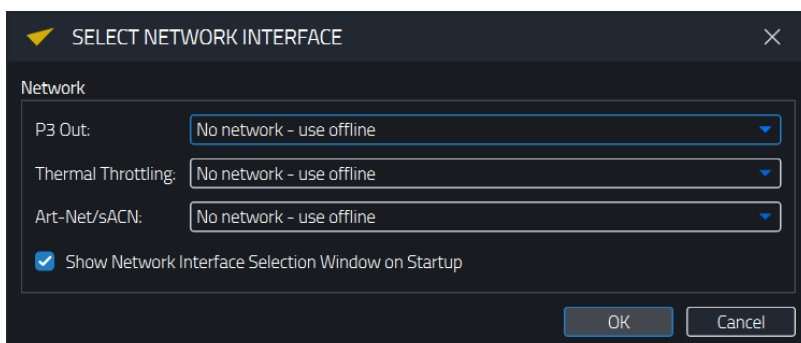


## Selection of network interface for communication with fixtures

During startup the P3-PC System Controller™ will let you decide which network interface to use for communication with the fixtures. Please select the interface to which the network cable running to the Martin P3 Fixtures is connected.



If you will only be using the P3-PC System Controller™ as Offline Editor, select “No network - use offline”.



# P3-PC System Controller™ License

As of P3-PC System Controller software 5.1.0, it is no longer required to have a Martin One-Key™ with P3-PC license to enable NDI input, capture video from your screen or enable a Hippo viewport and send it to the connected fixtures.

From version 5.1.0 onward, the Martin One-Key™ is only used to carry a P3 Fixture Adjuster license, required to “re-calibrate” fixtures in the field (make adjustments to factory calibration to compensate for LED ageing).

The Martin One-Key™ icon in the top-right corner will indicate presence of such license.



# License Backup

An advantage of the One-Key system is the ability to back up the licenses to protect against damage or theft.

## Online Backup

This service is not provided by Martin Professional, but by the manufacturer of the license system (Wibu Systems). All requests for support and questions about this feature need to be sent directly to Wibu Systems.

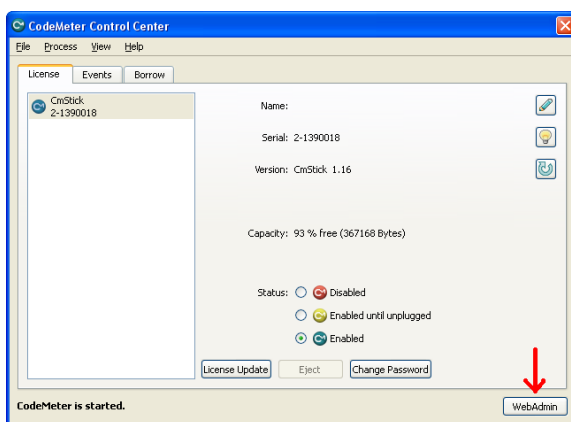
Register your One-Key™ and follow the instructions for backup and archiving of the included licenses on the following website: <https://my.codemeter.com>.

## Local Backup

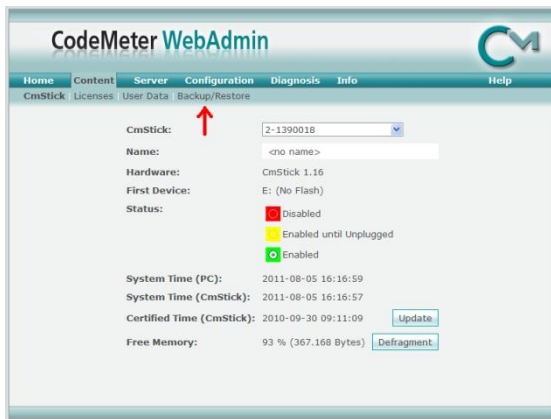
If a Martin One-Key™ dongle is lost, stolen or even defective, it can only be replaced if the user made and kept a backup file of the license(s) on the One-Key™ dongle.

With this backup file we can de-activate the old One-Key™ remotely and re-activate a new one. Please note that a fee is charged for this service.

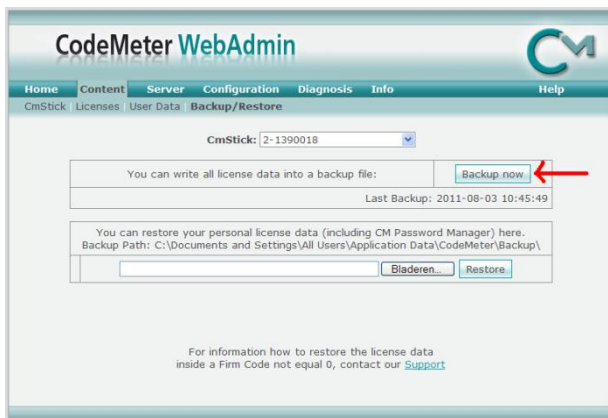
- 1) Start the CodeMeter Control Center via the Start menu or via the system tray. Click the “WebAdmin” button.



2) Click "Backup/Restore".



3) Click "Backup now" to create a backup file.



4) A pop-up window will inform you where the backup file was written. Please store this file safely (and preferably also on another computer).

