

# Ether2DMX8™

## Enum service manual

How to assign the DMX ports in the  
correct order

Author  
Kris Van Hullebusch

Date  
January 9, 2013

## Revision History

Version	Init.	Date	Description
A	KVH	January 9, 2013	First release

**Confidentiality Clause:**

This document is the property of Martin Professional A/S. Not to be handed over to, copied, or used by third party. Any reproduction of contents has to be authorized by Martin Professional A/S in writing.

## Table of Contents

<b>1. INTRODUCTION</b> .....	<b>4</b>
1.1 PURPOSE OF THE DOCUMENT .....	4
<b>2. GETTING STARTED</b> .....	<b>5</b>
2.1 TOOLS NEEDED .....	5
2.2 PREPARATIONS.....	5
<b>3. PROCEDURE</b> .....	<b>5</b>
3.1 SWITCHING ON THE ETHER2DMX8 BOX.....	5
3.2 THE ETHER2DMX8 BOX IN SYSTEM MODE.....	6
3.3 STARTING UP THE SOFTWARE.....	6
3.4 CONFIGURING THE DMX PORTS .....	7
3.5 FINALIZING THE PROCEDURE .....	7
<b>4. AFTERCARE</b> .....	<b>7</b>
4.1 TEST .....	7
<b>5. TECHNICAL SUPPORT</b> .....	<b>8</b>

## 1. Introduction

In case that a DMX PCB had to be replaced in the Ether2DMX8 box, it may be necessary to reassign the DMX ports in the proper order.

### 1.1 Purpose of the Document

This document describes:

- How to prepare the Ether2DMX8 box for the procedure
- How to perform the enum procedure
- Aftercare

## 2. Getting started

### 2.1 Tools needed

To perform the enum procedure, please make sure to have the following items at hand.

- Ether2DMX8 box with power supply cable
- PS/2 keyboard
- PS/2 mouse
- VGA monitor with VGA cable

### 2.2 Preparations

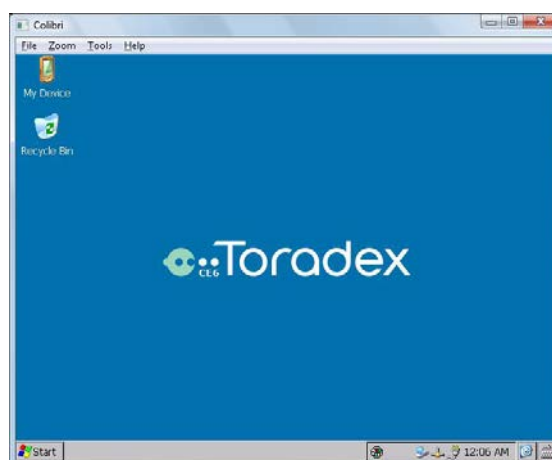
Connect the VGA monitor, PS/2 keyboard and PS/2 mouse to the backside of the Ether2DMX8 box as shown in the picture below. Ethernet & USB cable and USB thumb drive are not needed.



## 3. Procedure

### 3.1 Switching on the Ether2DMX8 box

When the Ether2DMX8 box is started, you will see the following on the VGA screen.



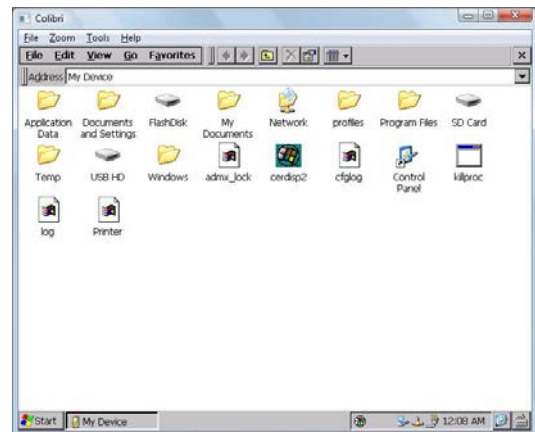
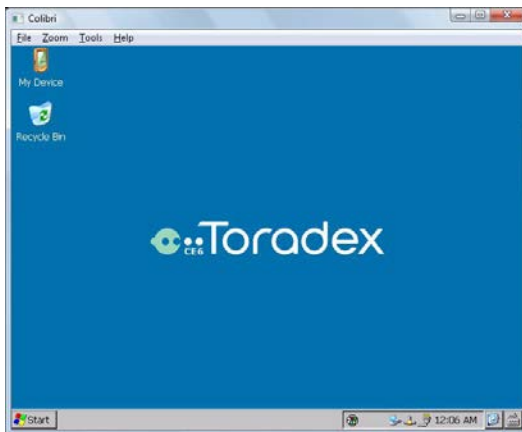
### 3.2 The Ether2DMX8 box in system mode

Now force-exit the Ether2DMX8 box into system mode by pressing the 4 buttons next to the LCD. Make sure “Forced Exit” appears on the LCD.

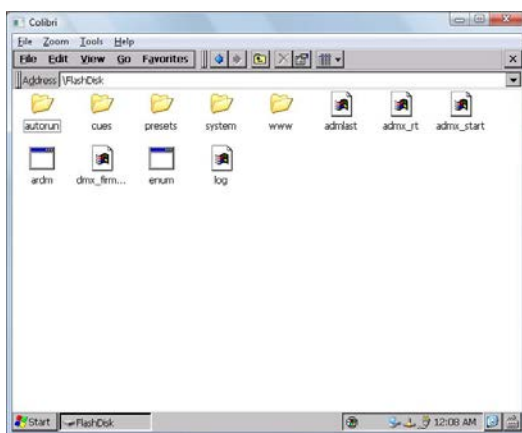


### 3.3 Starting up the software

Use the mouse and double click on “My Device”. Now double click on “FlashDisk”.

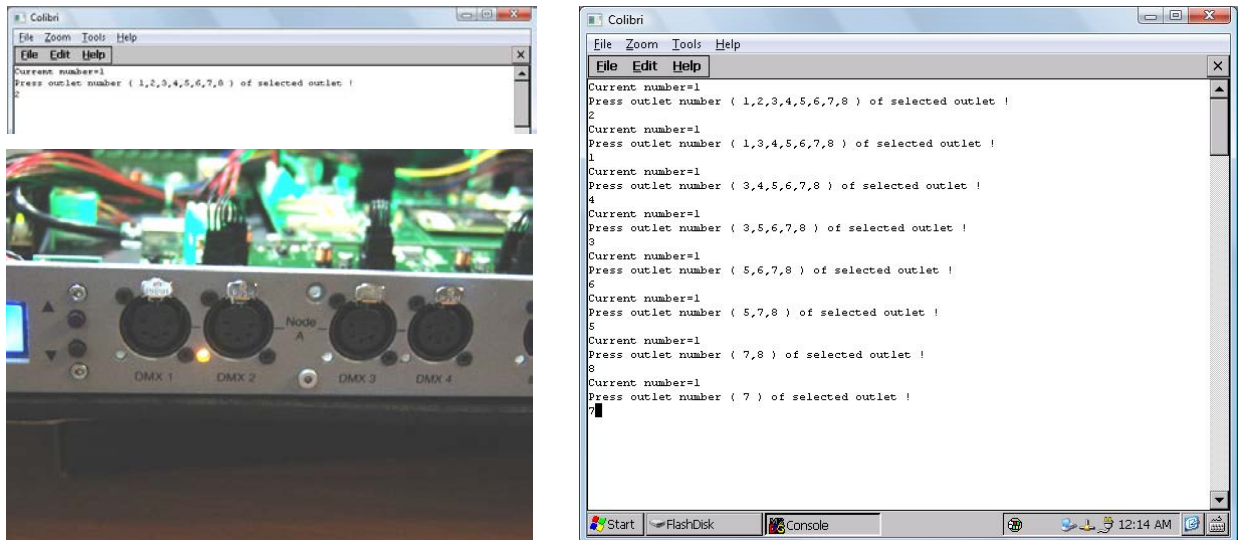


Start the enum program by double clicking on “enum”.



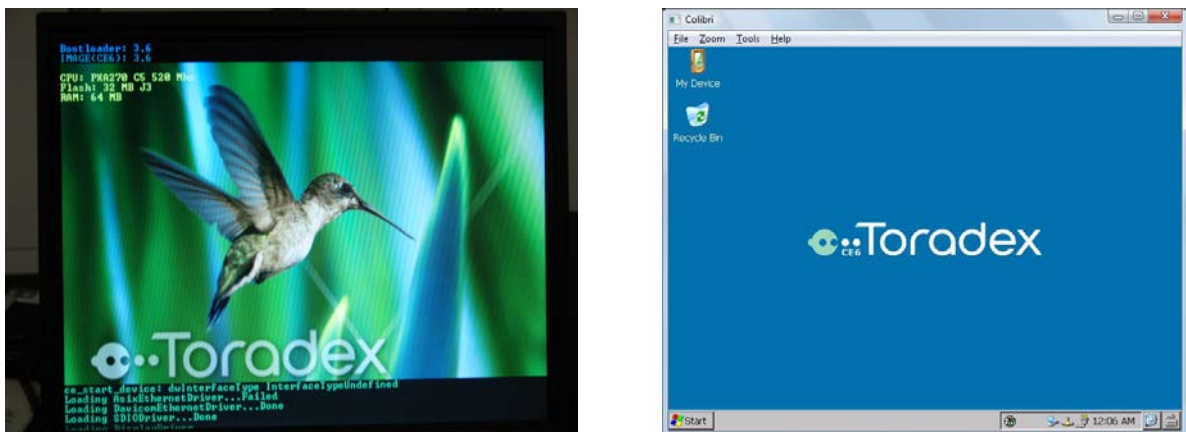
### 3.4 Configuring the DMX ports

One output will be indicated with an orange LED. Enter the number of the indicated port and press “Enter”. Repeat this step for all the ports.



### 3.5 Finalizing the procedure

After the configuration with the enum program, switch off the power and wait a few seconds. Now switch the power back on. When the Ether2DMX8 box is restarting you will see the following screens.



## 4. Aftercare

### 4.1 Test

Please test the Ether2DMX8 box using the build in presets and make sure it is functioning properly before using it in a show. Please consult the user manual for further information. This can be downloaded from the website [www.martin.com/service](http://www.martin.com/service)

## 5. Technical support

In case you need further technical support, please use the following contact details:

Email: [controllersupport@martin.dk](mailto:controllersupport@martin.dk)

Hotline: +45 8740 0015