

Photometric Report

ERA 600 – Narrow

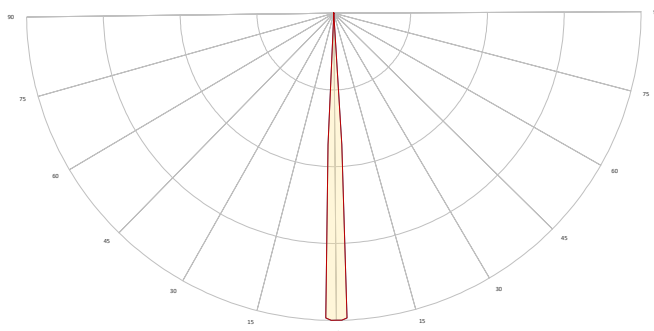
MARTIN PROFESSIONAL R&D OPTICAL LABORATORY

GENERAL SPECIFICATIONS

Total Fixture Output:	19000 lm
Light Engine Output:	37 klm
Efficacy:	25 Lumen/Watt
Lens Option:	N/A
Zoomrange:	6-40°
CRI:	70
CQS:	67
TM-30 Rf:	65
TM-30 Rg:	96
TLCI:	45
Color Temperature:	6800 K



MEASUREMENT



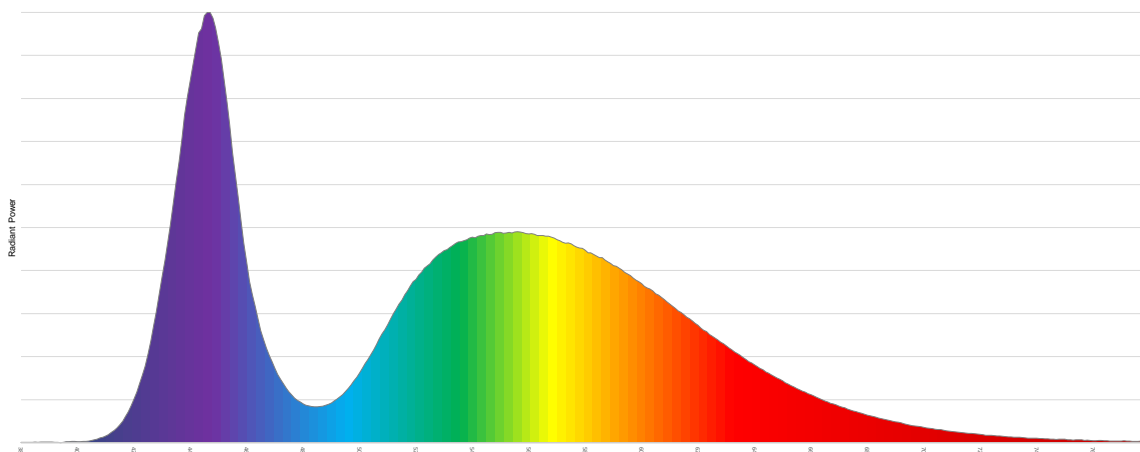
- Vertical - Horizontal

Catalog Number:	9025122049
Measured Output:	8907 lm
Measured Peak:	381701 cd
Consumed Power:	742.9 W
Efficacy:	26.0 Lm/Watt

Beam Angle (50%):	5.8°
Field Angle (10%):	6.7°
Cutoff Angle (3%):	7.4°

Measurement Condition:	
Ambient Temperature:	25° +/- 5° C
AC Supply:	230V/50Hz

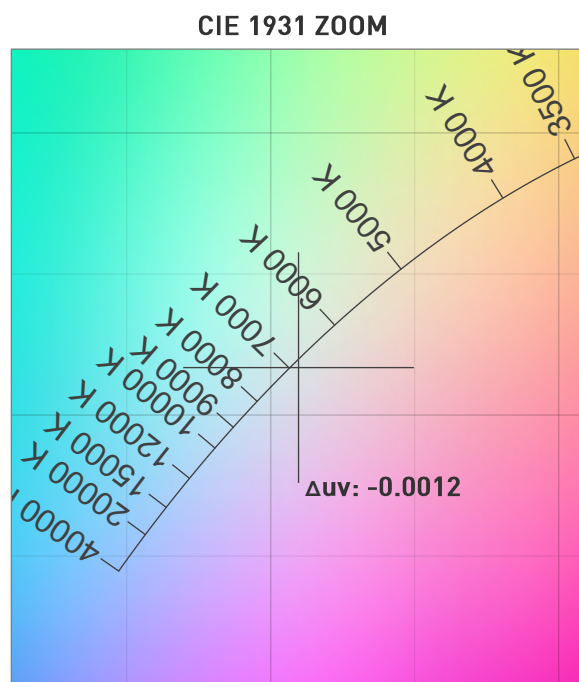
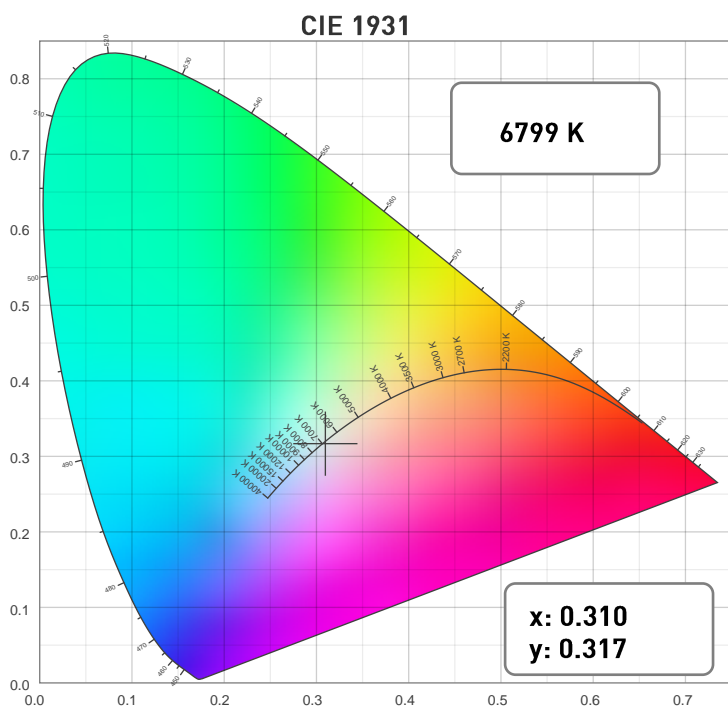
SPECTRAL DISTRIBUTION



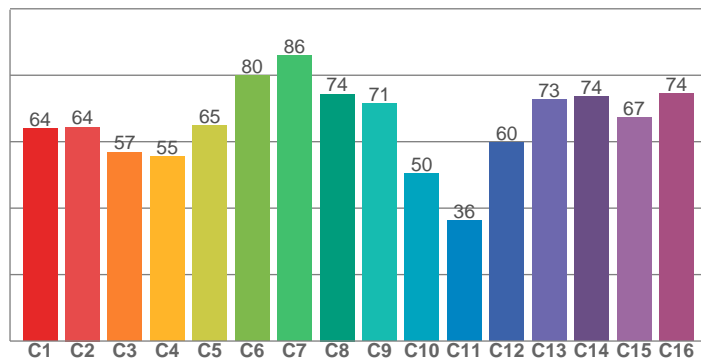
Photometric Report

ERA 600 – Narrow

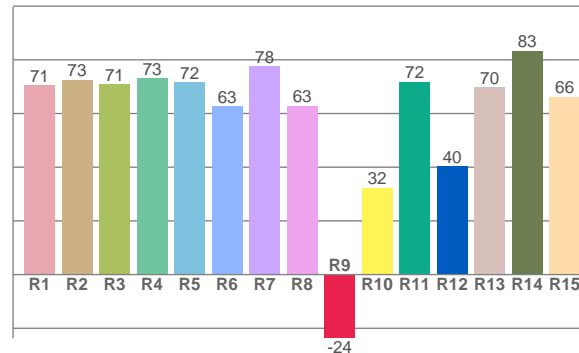
CHROMATICITY



TM30: 65.3



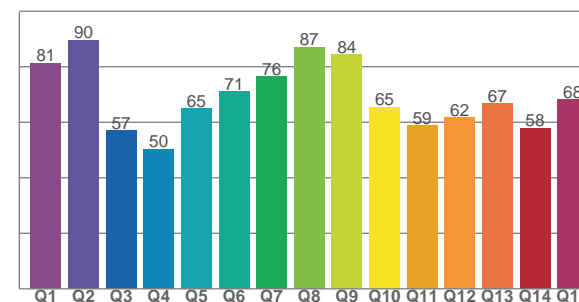
CRI: 70.3 (R1-R8)



COLOR PARAMETERS

Color Temperature	Color Rendering Index	Red Component	Color Fidelity	Color Gamut
CCT	CRI	CRI R9	TM30 Rf	TM30 Rg
6799 K	70.3	-23.8	65.3	95.5

CQS: 67.3



Television Lighting Consistency Index	Color Quality Scale	Color Coordinate CIE 1931	Color Coordinate CIE 1931	Color Coordinate CIE 1964	Color Coordinate CIE 1964	Color Deviation from Black Body
TLCI	CQS	x	y	u	v	Δuv
45	67.3	0.310	0.317	0.200	0.307	-0.0012

ERA 600 – Narrow

TM30

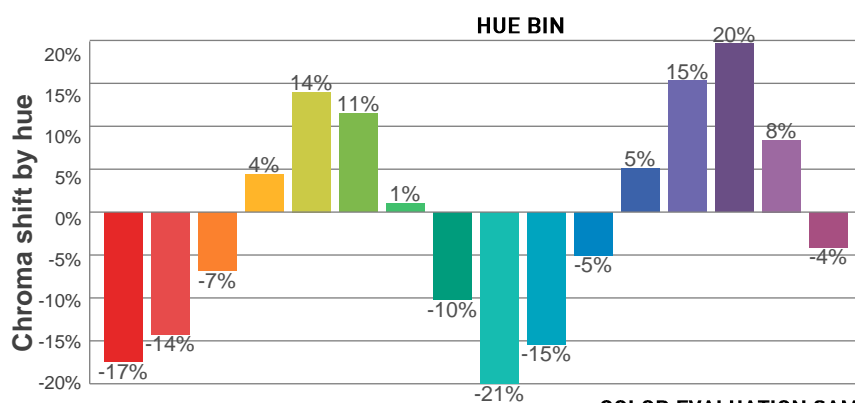
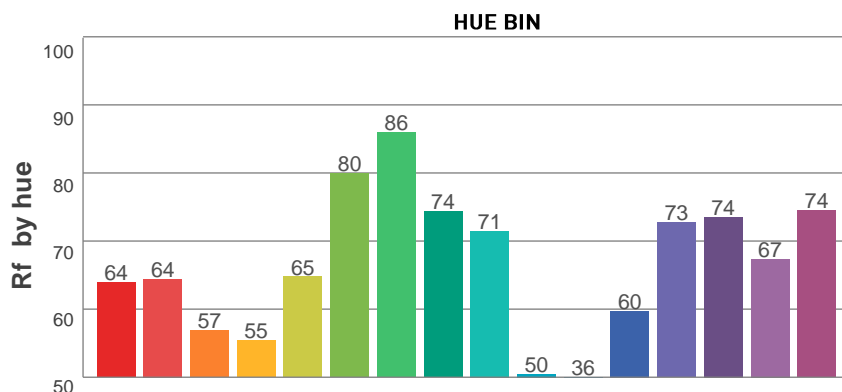
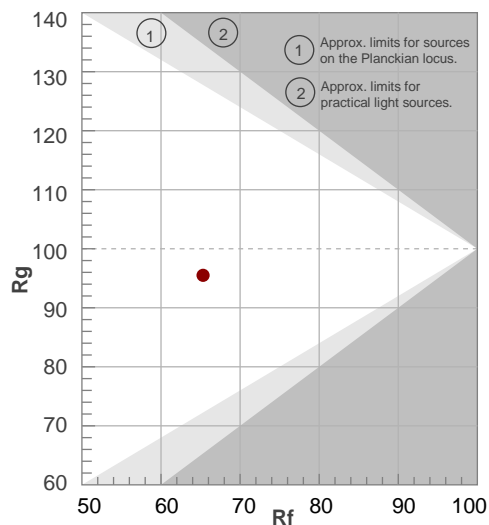
Rf 65.3

Fidelity index Rf

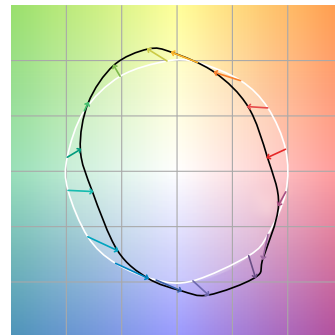
Rg 95.5

Gamut index Rg

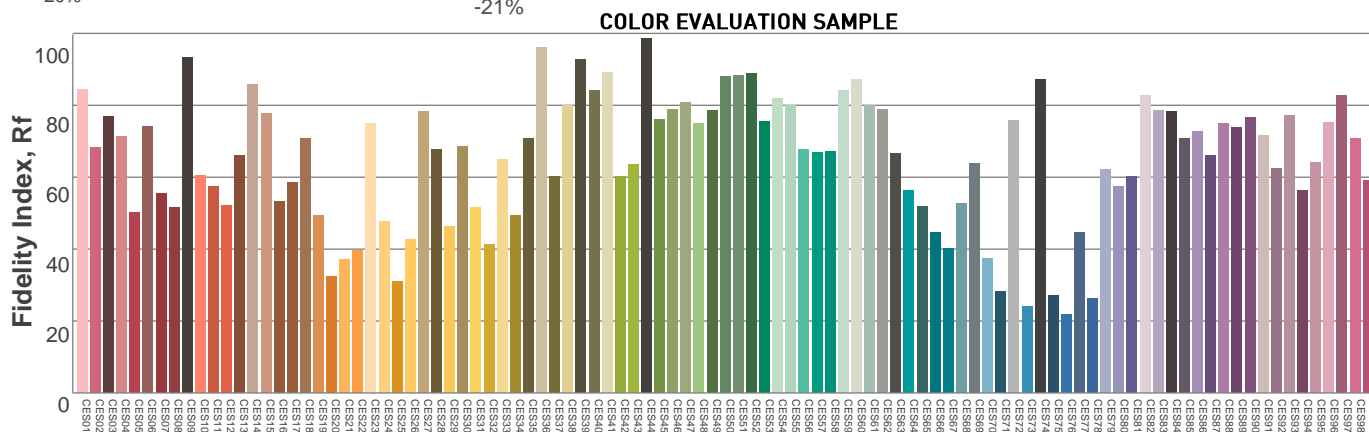
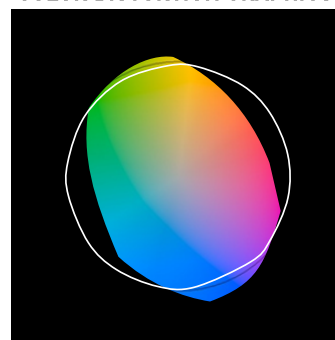
		Graphic shifts (%)	
Hue Bin	R_f	Chroma	Hue
1	64	-17%	-4%
2	64	-14%	11%
3	57	-7%	24%
4	55	4%	24%
5	65	14%	15%
6	80	11%	-1%
7	86	1%	-8%
8	74	-10%	-9%
9	71	-21%	5%
10	50	-15%	25%
11	36	-5%	32%
12	60	5%	24%
13	73	15%	11%
14	74	20%	-6%
15	67	8%	-21%
16	74	-4%	-13%



COLOR VECTOR GRAPHICS



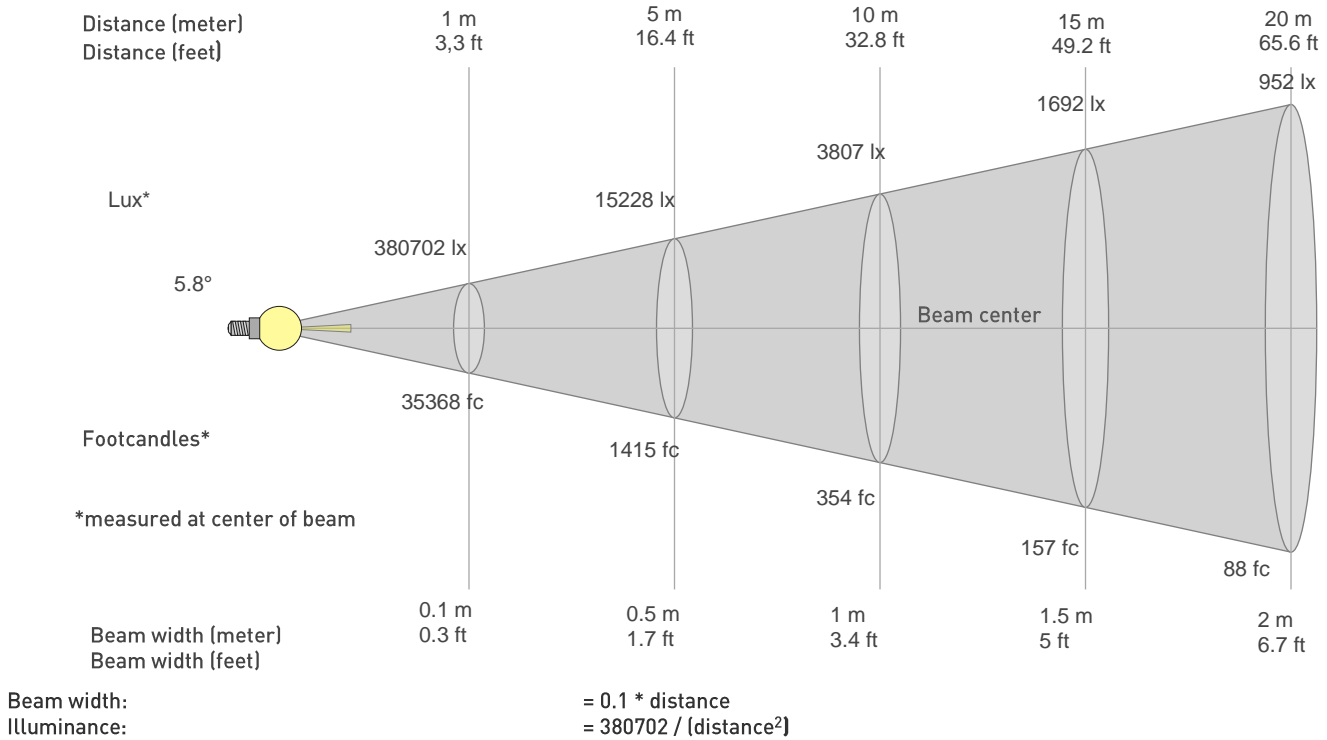
COLOR DISTORTION GRAPHICS



Photometric Report

ERA 600 – Narrow

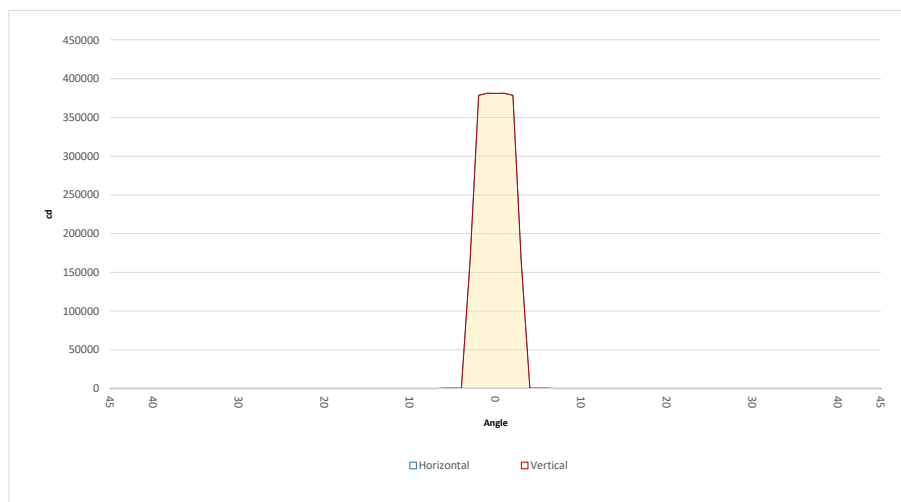
BEAM DETAILS



distance in [m] for illuminance in [lux] distance in [ft] for illuminance in [fc]

BEAM ILLUMINANCE FROM 1-20M

1m	2m	3m	4m	5m	6m	7m	8m	9m	10m	11m	12m	13m	14m	15m	16m	17m	18m	19m	20m
3.3ft	6.6ft	9.8ft	13.1ft	16.4ft	19.7ft	23ft	26.2ft	29.5ft	32.8ft	36.1ft	39.4ft	42.7ft	45.9ft	49.2ft	52.5ft	55.8ft	59.1ft	62.3ft	65.6ft
380702lx	95175lx	42300lx	23794lx	15228lx	10575lx	7769lx	5948lx	4700lx	3807lx	3146lx	2644lx	2253lx	1942lx	1692lx	1487lx	1317lx	1175lx	1055lx	952lx
35368.4fc	8842.1fc	3929.8fc	2210.5fc	1414.7fc	982.5fc	721.8fc	552.6fc	436.6fc	353.7fc	292.3fc	245.6fc	209.3fc	180.5fc	157.2fc	138.2fc	122.4fc	109.2fc	98fc	88.4fc



BEAM ANGLE 50%	FIELD ANGLE 10%	CUTOFF ANGLE 3%
5.8°	6.7°	7.4°