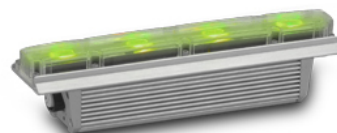
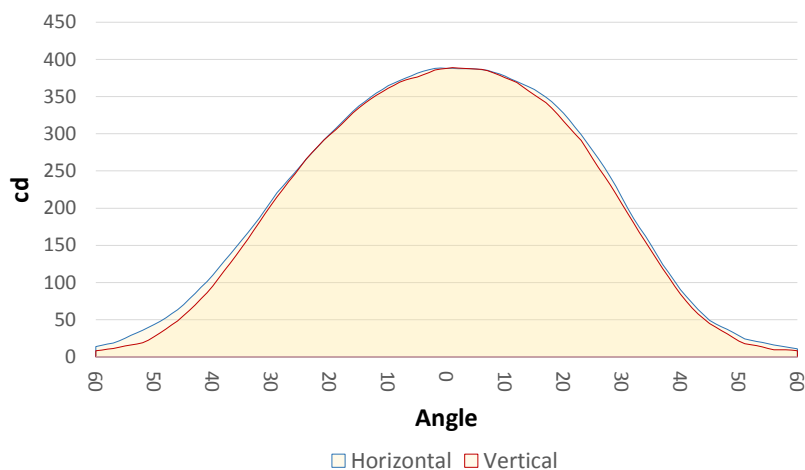


General Specifications:

Typical Max. Fixture Output:	515 lm
Typical Max. Peak:	467 cd
Typical Max. Efficacy:	34 lumen/watt
Beam Configuration:	Wide
CRI:	73+
Color Temperature:	Variable



Measurement

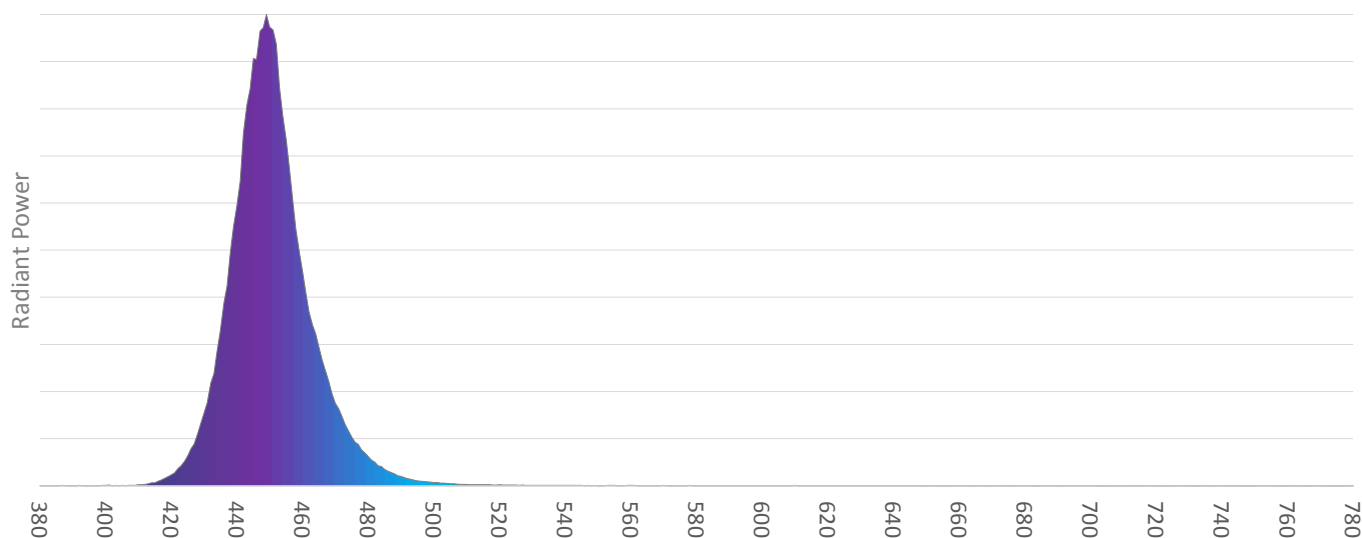


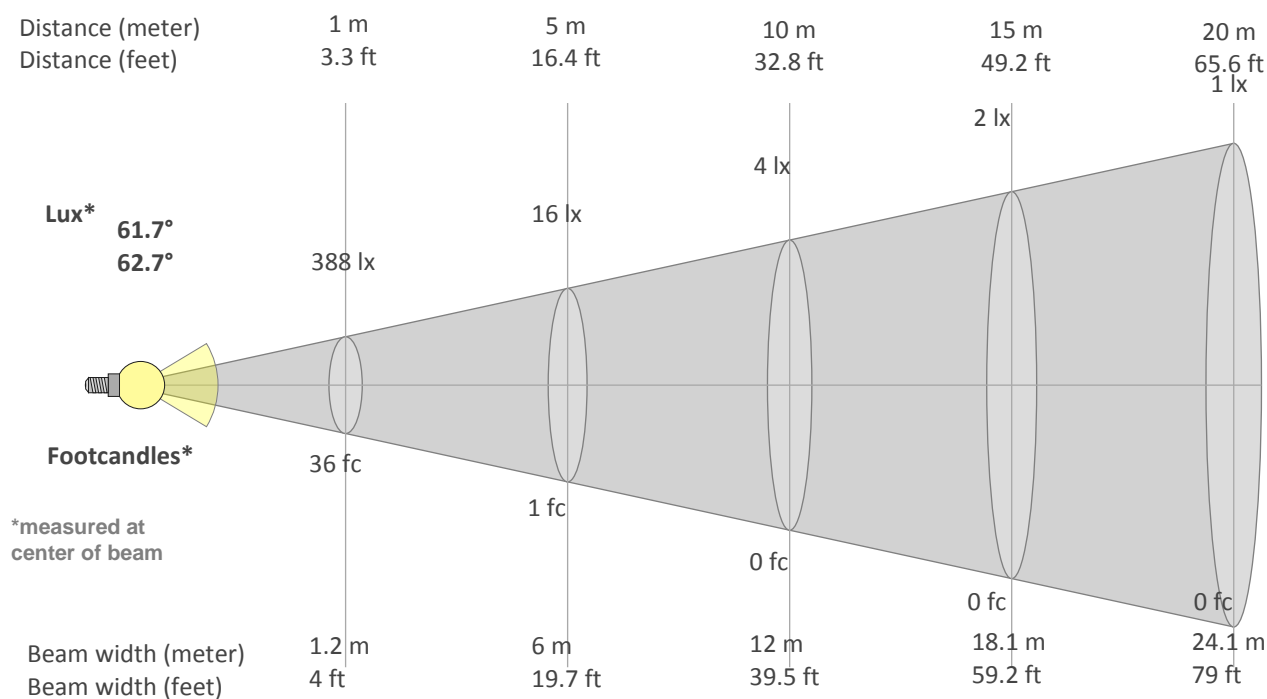
Catalog Number:	90356991
Measured Output:	74 lm
Measured Peak:	395 cd
Consumed Power:	14.4 W
Efficacy:	5.1 lm/watt

Beam Angle (50%):	61.7°/62.7°
Field Angle (10%):	94°/98.7°
Cutoff Angle (3%):	114.5°/123°

Measurement Condition:	
Ambient Temperature:	25 +/- 5 °C
AC Supply:	230V/50Hz

Spectral distribution





Calculation of beam diameter and luminous intensity

Half-peak diameter = 1.2 x distance

Illuminance = 388 / (distance²)

distance in [m] for illuminance in [lux]

distance in [ft] for illuminance in [fc]

Measurements are performed according to CIE S:025 / EN13032-4.