

# EvenLED™ LED Replacement Kit Installation Guide



**WARNING!** Before installing an LED unit in an EvenLED panel, Read “Safety Information” on page 3 of the EvenLED user manual supplied with the EvenLED and available for download free of charge from the EvenLED Support page on [www.martin.com](http://www.martin.com).

**WARNING!** Installation must be carried out by qualified professionals only. Contact your Martin supplier for assistance if you have any questions about how to install this product safely.

**WARNING!** Disconnect power to the panel and allow it to cool before carrying out work on the product.

Each of the EvenLED video panel's 16 LEDs can be removed and replaced if necessary using the LED Replacement Kit, P/N 50401501, available from Martin.

## Unpacking

See Figure 1. The LED replacement Kit contains:

- 1 x replacement LED unit in anti-static bag
- 1 x front glass
- 3 x PZ1 screws
- 1 x tube of cooling paste
- This installation note.



Figure 1: Kit contents

## Procedure

To replace an LED unit:

1. Disconnect power to the EvenLED panel and allow to cool.
2. See Figure 2. Unclip the front glass from in front of the LED you want to replace and remove the 3 retaining screws (arrowed) from the LED unit.

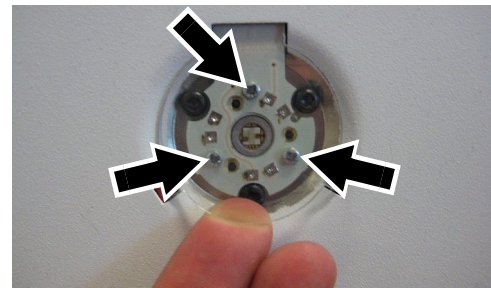


Figure 2: Front glass and retaining screws

3. See Figure 3. Note how the bare metal on the end of the flat LED wiring strip that sits in the white multi-connector faces away from the PCB. Pull back on the two tabs (arrowed) to release the EvenLED panel wiring from the white multi-connector, then remove the old LED unit.

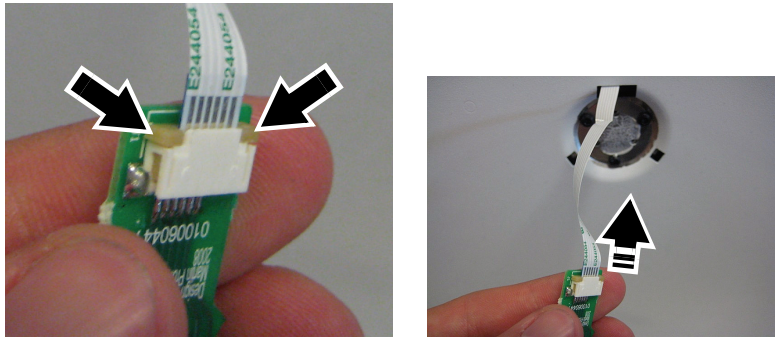


Figure 3: Release the multi-connector

4. See Figure 4. Apply a thin coat of cooling paste from the supplied tube to the area where the new LED will sit.

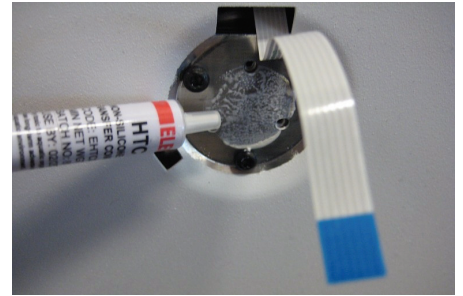


Figure 4: Apply heat paste

5. See Figure 5. Connect the wiring to the white multi-connector on the new LED unit, making sure that the bare metal on one side of the wiring faces away from the LED PCB as shown in Figures 3 and 4. Lock the wiring in place with the plugs arrowed in Figure 3.
6. Fasten the LED unit to the EvenLED panel with the three new Phillips Pozidriv PZ1 retaining screws supplied in the Kit. **Important! Use a torque driver and tighten the screws to a torque of 0.4 Newton-meters.**

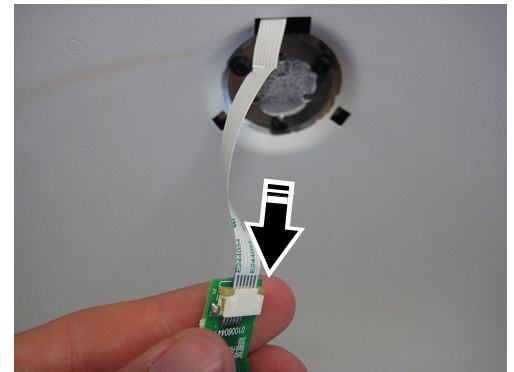


Figure 5: Connect multi-connector

7. See Figure 6. Remove the protective plastic film from both sides of the front glass and clip the front glass into position over the LED.

*This guide and all other EvenLED user documentation is available for download free of charge from the EvenLED Product Support area at [www.martin.com](http://www.martin.com).*



Figure 6: Remove protective film

**Martin**<sup>®</sup>

www.martin.com • Olof Palmes Allé 18 • 8200 Aarhus N • Denmark  
Tel: +45 8740 0000 • Fax +45 8740 0010