

# MACH CW112C



## KEY FEATURES

- Easy installation
- Built-in crossover for satellite speakers
- Optimized for use with Mach Ci series
- Corner placement possible
- 12 Flying points

## DESCRIPTION

The CW 112C subwoofer combines easy installation and deep bass output due to the unique design. The subwoofer is designed to be placed in a corner or mounted on a standard ceiling. The CW112C has 12 integrated flying points allowing for multiple mounting options on a wall or against the ceiling. The subwoofer has a 12" double voice coil drive unit which allows a stereo signal to be applied to the terminals. The built-in crossover makes it a perfect solution in combination with the Ci speakers.

## SPECIFICATIONS

|                           |  |
|---------------------------|--|
| Power rating IEC268:      | 150 watt per voice coil. Total system: 300W  |
| Power rating peak:        | 600 watt. Total system: 1200W  |
| Sensitivity 1w/1m:        | 95 dB  |
| Max SPL, calc. long term: | 117 dB   |
| Max SPL, peak:            | 123 dB   |
| Frequency range +/-3dB:   | 35-150 Hz  |
| Nominal impedance:        | 8ohm per voice coil  |
| Recommended amplifier:    | For each side: one voice coil and one Ci8 = 390W in 4 ohm run through built-in crossover |

### Weight & Measurements:

|                     |   |
|---------------------|---|
| Dimensions (HxWxD): | 580x580x365mm<br>(22.8x22.8x14.4 inches)                        |
| Net weight:         | 23 kg (51 lbs)  |
| Finish:             | 19mm MDF with black Safecoat coating                            |
| Grille:             | 2mm steel with foam backing                                     |
| Input connectors:   | Barrier strips input and output for satellite speakers          |
| Flying system:      | Eyebolts, mounting bracket                                      |
| Rigging hardware:   | Eyebolt part no. 93940002<br>Mounting bracket part no. 26020350 |

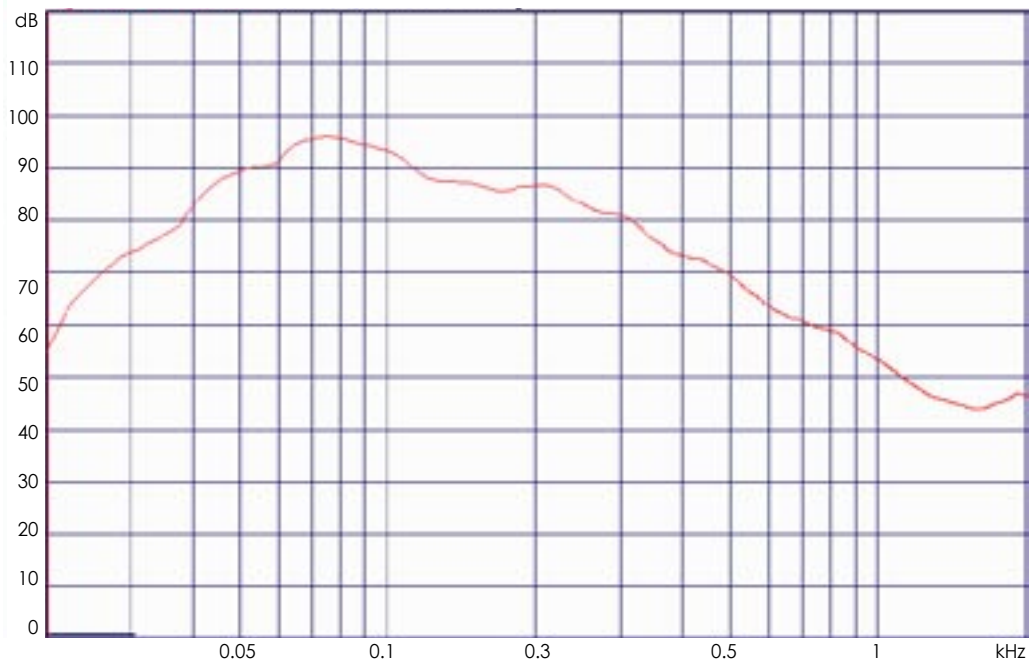
## ARCHITECTURAL SPECIFICATIONS

The loudspeaker system shall be the Mach CW112C with an IEC power handling of 150 watt per voice coil. The loudspeaker shall have a sensitivity of 95 dB and a maximum output of 123 dB. The loudspeaker system shall also have 12" double voice coil drive unit and a built-in crossover. The subwoofer shall be constructed of 19mm Medium Density Fiberboard with black Safecoat coating and shall be trapezoidal in shape with a 15 degree angle. It shall be 580mm(22.8in) high, 580mm(22.8in) wide and 365mm (14.4in) deep with a weight of 23 kg (51 lbs).

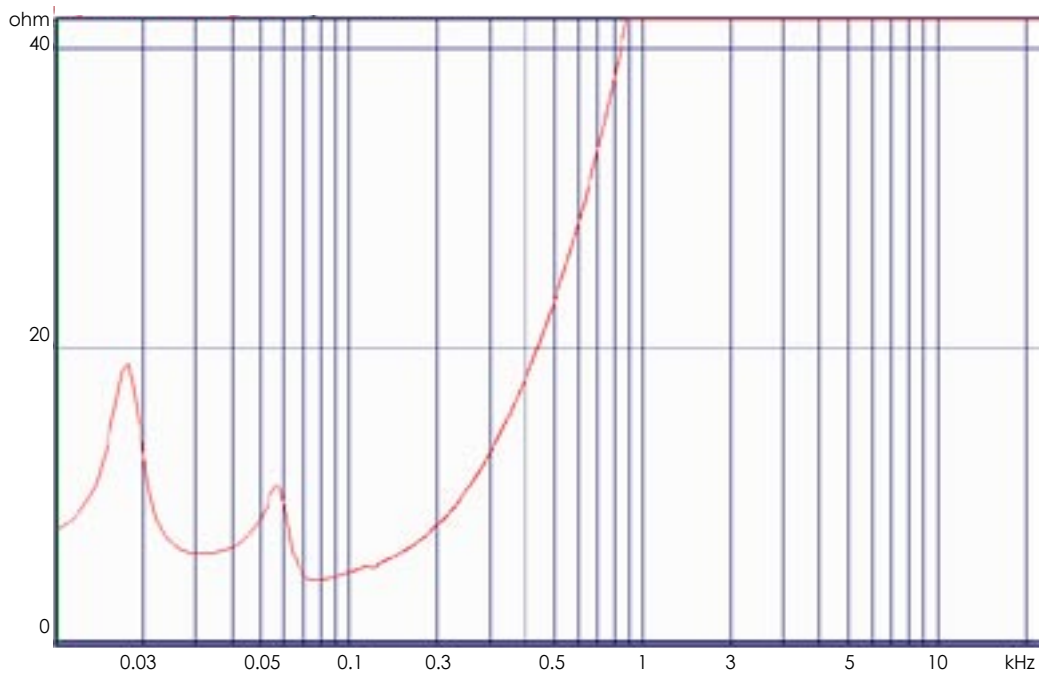
**NOTE:** Mach is continually working on research and production improvements, which can be introduced into existing products without notice. The products will always equal or exceed the original design specifications unless otherwise stated.

# MACH CW112C

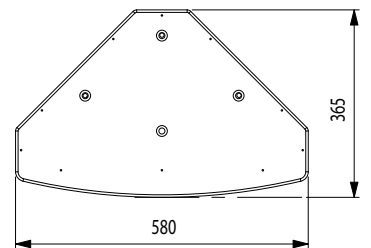
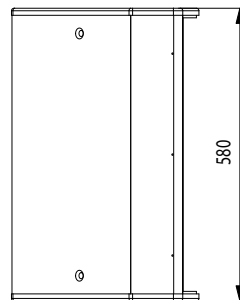
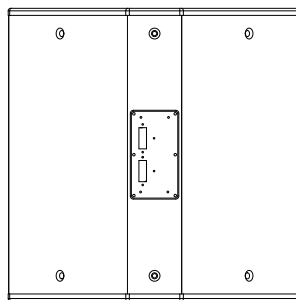
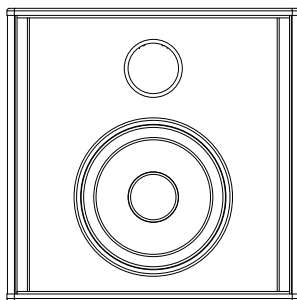
## Frequency Response



## Impedance Response

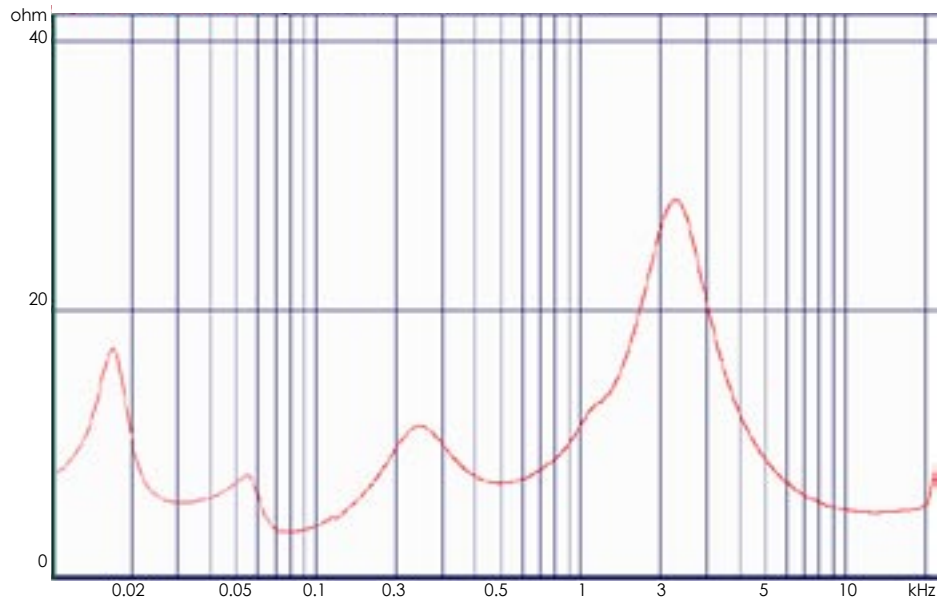


## Size and Shape

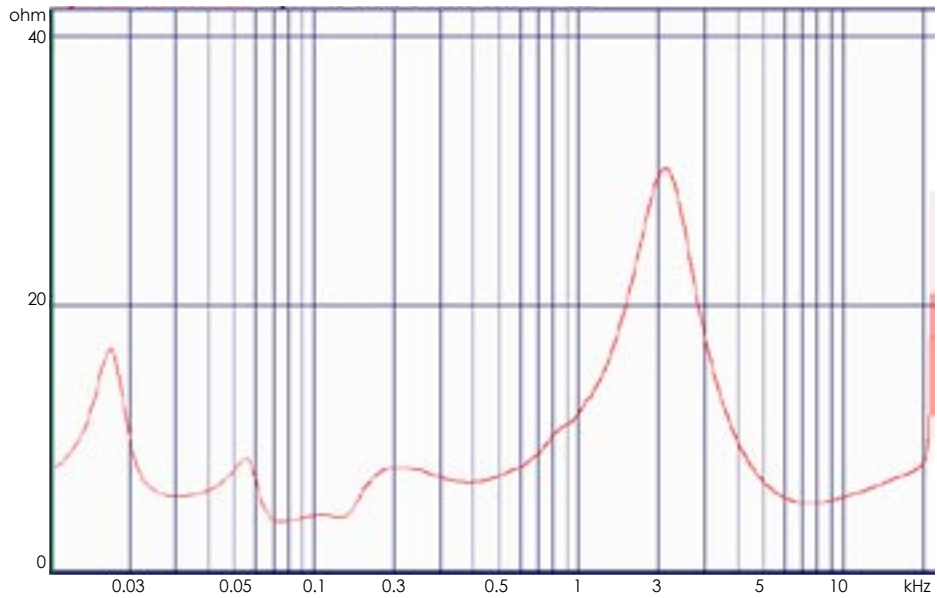


# MACH CW112C

Impedance Response with Ci4



Impedance Response with Ci6



Impedance Response with Ci8

