

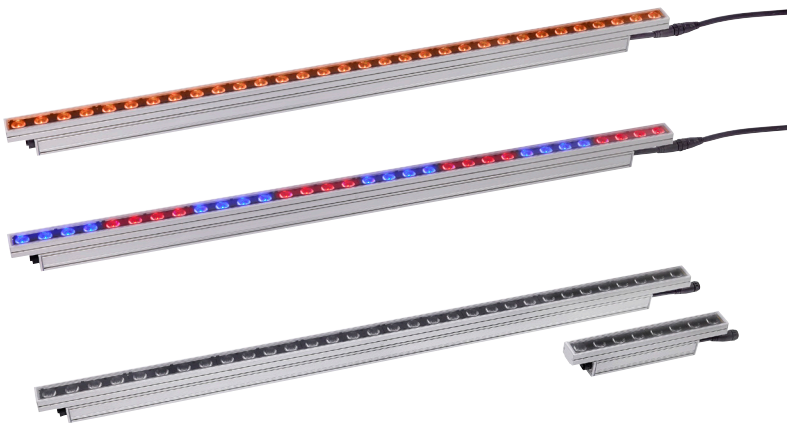
# EXTERIOR LINEAR PRO GRAZE QUAD

OUTDOOR LINEAR GRAZE FIXTURE WITH COLOR BOOSTING TECHNOLOGY AND DEDICATED COLOR TEMPERATURE CHANNEL

SPEC SHEET

## HIGHLIGHTS

- Color-calibrated Quad color LEDs (8 LEDs/ft)
- Homogenous color mixing
- Selectable segment modes
- Selectable power consumption and integrated multi-range power supply unit for long fixture runs
- Hybrid power and data connector for easy daisy-chained configurations
- Rugged IP66 housing designed for permanent outdoor installations
- Low weight - 0.8 kg/ft (1.9 lbs/ft)
- Compact design - 40mm (1.57 inch) width



## OVERVIEW

Martin Exterior Linear Pro Graze QUAD lights are compact, LED-based architectural fixtures, available in 1 and 4 foot lengths making them easier to integrate into architectural elements. Delivering uniform light distribution at a 15 degree beam angle, full color mixing and including a dedicated color temperature control channel, which accurately follows the black body curve, they are ideal for illuminating textured surfaces, high walls and linear structures in permanent indoor and outdoor locations, emphasizing architectural features in stadiums, bridges, tunnels and other applications.

## KEY MESSAGES

### EASE OF INSTALLATION

The slim design and low weight makes them easier to integrate into architectural elements discreetly and with less structural requirements. They have flexible change-of-beam angles for late design changes and on-site adjustments. A smart mounting plate design offers a variety of standard or custom bracket solutions.

### SOPHISTICATED COLOR CONTROL

These QUAD color fixtures include logic RGB control of the RGBW engine, making it easier to mix colors when the white color is automatically calculated. Factory calibration of colors offers superior consistency and user-selectable default color temperature with the ability to set a favorite default color temperature. Fine segment control is also included for more organic and subtle color transitions.

### SMART INFRASTRUCTURE

Fixtures are DMX-controllable and easy to install due to their integrated universal power supply. They can also be daisy-chained using a combined power and data connector, which enables long fixture runs and more simple infrastructures.

### PREMIXED COLORS WITH COLOR BOOST

QUAD color LEDs deliver an enhanced visual appearance with homogenous color mixing and high lumen output of mixed colors. A color boosting feature is also included for full powered illumination of a single color or mixed colors, making them up to three times brighter than comparable fixtures yet boasting lower total power consumption.

### EFFICIENT OPERATION

With more than 50 lm/W, Exterior Linear Pro QUAD fixtures are highly efficient. Multiple power modes (12W/10W/5W, including ASHRAE compliance) can be set via Remote Device Management (RDM) to reduce power consumption as needed.

### GRANULAR LIGHTING CONTROL

An integrated 6-inch (15 cm) segment mode enables more granular lighting control for organic and subtle looks.

# EXTERIOR LINEAR PRO GRAZE QUAD

OUTDOOR LINEAR GRAZE FIXTURE WITH COLOR BOOSTING TECHNOLOGY AND DEDICATED COLOR TEMPERATURE CHANNEL

SPEC SHEET

## FEATURES

- Color-calibrated Quad color LEDs (8 LEDs/ft)
- Homogenous color mixing
- Narrow 15° beam angle
- Dedicated color temperature control channel
- Selectable segment modes (1, 4 or 8 segments)
- Selectable power consumption (12W/10W/5W) per foot
- Integrated multi-range power supply unit (PSU) 100-277V for long fixture runs
- Hybrid power and data connector for easy daisy-chained configurations
- DMX and RDM control
- Integrated magnetic switch for local diagnostics
- Rugged IP66 housing designed for permanent outdoor installations
- Low weight 0.8 kg/ft (1.9 lbs/ft)
- Compact design - 40mm (1.57 inch) width



## ORDERING INFORMATION

- Exterior Linear Pro GRAZE QUAD 1ft.....P/N MAR-90570000
- Exterior Linear Pro GRAZE QUAD 4ft.....P/N MAR-90570003

### RELATED ITEMS

- Martin Companion Cable.....P/N MAR-91616091
- Martin Companion Cable (for firmware update over DMX): ..... Free download from [www.martin.com](http://www.martin.com)

### BEAM CONTROL:

- Glare shield, EL Pro 1ft set of 4.....P/N MAR-90570022
- Glare shield, EL Pro, 4ft set of 4.....P/N MAR-90570023
- Louvre, EL Pro Quad 1ft set of 4.....P/N MAR-90570024
- Asymm diffuser Wide EL Pro 4ft, set of 6.....P/N MAR-90570020
- Asymm diffuser Narrow EL Pro 4ft, set of 6.....P/N MAR-90570021

### MOUNTING BRACKETS:

- Adjustable bracket EL Pro 10 pcs.....P/N MAR-90570025
- Flange bracket EL Pro 10 pcs.....P/N MAR-90570026
- Quick mount bracket EL Pro 10 pcs.....P/N MAR-90570027

### PRE-ASSEMBLED PD HYBRID POWER DMX CABLES:

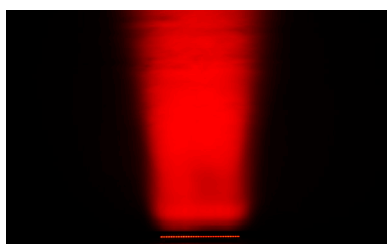
- Power DMX Cable PD PD 0.2M EU.....P/N MAR-91700004
- Power DMX Cable PD PD 1M EU.....P/N MAR-91700005
- Power DMX Cable PD PD 2.5M EU.....P/N MAR-91700006
- Power DMX Cable PD PD 5M EU.....P/N MAR-91700007
- Power DMX Cable PD PD 10M EU.....P/N MAR-91700008
- Power DMX Cable PD PD 0.2M US.....P/N MAR-91700010
- Power DMX Cable PD PD 1M US.....P/N MAR-91700011
- Power DMX Cable PD PD 2.5M US.....P/N MAR-91700012
- Power DMX Cable PD PD 5M US.....P/N MAR-91700013
- Power DMX Cable PD PD 10M US.....P/N MAR-91700014

### BULK HYBRID POWER DMX CABLES AND CONNECTORS:

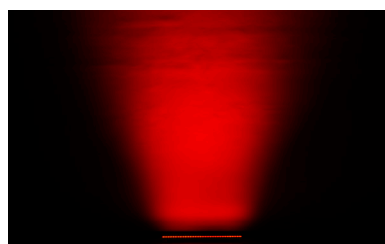
- Power DMX Cable 100M Roll US.....P/N MAR-91700016
- Power DMX Cable 100M Roll EU.....P/N MAR-91700009
- Field installable connector PD female.....P/N MAR-91700017
- Field installable connector PD male.....P/N MAR-91700018

### JUNCTION BOX, END TERMINATION CAP, MULTITOOL:

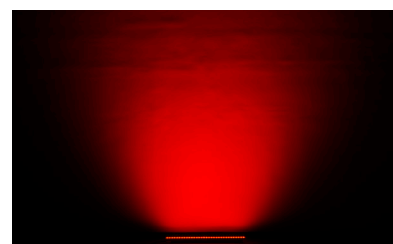
- End termination cap PD.....P/N MAR-91700015
- Junction Box Power DMX to PD.....P/N MAR-91700019
- Exterior Multitool.....P/N MAR-90590025



15°



15° x 30°



15° x 60°

# EXTERIOR LINEAR PRO GRAZE QUAD

OUTDOOR LINEAR GRAZE FIXTURE WITH COLOR BOOSTING TECHNOLOGY AND DEDICATED COLOR TEMPERATURE CHANNEL

SPEC SHEET

## TECHNICAL SPECIFICATIONS

### DYNAMIC EFFECTS

Intensity .....	0 - 100%
Color mixing .....	RGB (white is calculated automatically)
Segment Control .....	0.5ft, 1 ft or full 4 ft fixture control

### CONTROL AND PROGRAMMING

Control systems.....	DMX, RDM
Stand-alone control.....	Up to 20 scenes with individual fade/hold times
Control resolution .....	8-bit DMX individual color control
Dimmer resolution .....	16-bit DMX control of intensity
DMX channels 4ft.....	6/4/3/12/24 (standard/RAW/1 seg/4 seg/8 seg)
DMX channels 1ft.....	6/4/3/6 (standard/RAW/1 seg/2 seg)
User interface.....	Magnetic button to call up fixture status and test fixture
DMX compliance.....	USITT DMX512/1990
RDM compliance.....	ANSI/ESTA E1.20

### OPTICS

Light source.....	8 x RGBW LEDs per foot
Minimum LED lifetime.....	50 000 hours (to >70% luminous output)*
Beam angle** .....	15°, 15° x 30°, 15° x 60°
Binning.....	Tight color and flux binning
Calibration.....	Full Gamut Color Calibration (1 step MacAdam ellipse)

\*Figure obtained under manufacturer's test conditions

\*\* Asymmetric beam angles for available as accessory micro-lens films

### PHOTOMETRICS

CRI (Color Rendering Index) .....	>70
CCT.....	2000K – 11000K (default 4000K)

Luminous output .....	1 FT at 12W	4 FT at 12W
2700K .....	620 lumens	2.480 lumens
4000K .....	670 lumens	2.680 lumens
6000K .....	700 lumens	2.800 lumens
RED .....	260 lumens	1.040 lumens
GREEN.....	570 lumens	2.280 lumens
BLUE .....	120 lumens	480 lumens

\* All Photometric Data measured in steady state (30 minutes warm-up time) at 25°C ambient.

### CONSTRUCTION

Housing .....	Aluminum
Finish .....	Clear anodized (standard) or optional colors on request
Front.....	Clear polycarbonate
Effective Projected Area (EPA).....	0.04 m <sup>2</sup> per ft
Protection rating.....	IP66
IK rating .....	IK08
Corrosion resistance .....	C5 High (ISO 12944-6)

Vibration resistance .....	1.0g, Sinusoidal (IEC 60068-2-6), 0.7g RMS Random (IEC 60068-2-64), 3.0g (ANSI C136-31)
----------------------------	---

### INSTALLATION

Orientation.....	Any
Minimum distance to illuminated surfaces .....	0.1 m / 0.3 ft.

### ELECTRICAL

AC power.....	100-277 V AC nominal, 50/60 Hz
Power supply unit .....	Auto-ranging electronic switch mode
Typical half-cycle RMS inrush current at 230 V, 50 Hz .....	0.35 A
Typical earth-leakage current 1 ft .....	0.15 mA
Typical earth-leakage current 4 ft .....	0.21 mA
Power Factor 12 W / 10 W mode .....	0.95 @ 100 V / 120 V / 208 V / 230 V / 240 V, 0.90 @ 277 V
Power Factor 5 W mode .....	0.90 @ 100 V / 120 V / 208 V / 230 V / 240 V, 0.70 @ 277 V

#### Power Consumption 1 ft

Maximum .....	12 W / 10 W / 5 W *
Idle .....	1.54 W *

#### Power Consumption 4 ft

Maximum .....	48 W / 40 W / 20 W *
Idle .....	2.30 W *

\* Measurements made at nominal voltage. Allow for a deviation of +/- 10%.

Idle: steady state, all LEDs at zero intensity.

Power Consumption: Depending on power setting mode.

### THERMAL

Cooling .....	Convection
Maximum ambient temperature.....	45° C (113° F)*
Minimum ambient temperature.....	-30° C (-22° F)
Total heat dissipation (calculated, +/- 10%) .....	41 BTU/hr. per foot

\*Above this temperature, the fixture regulates output to protect from overheating

### APPROVALS

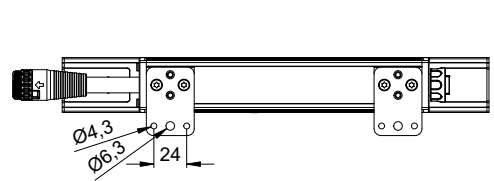
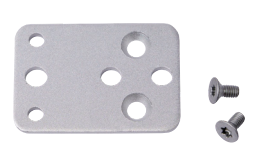
EU Safety.....	EN 60598-2-5 (EN 60598-1), EN 62471, EN 62493
EU EMC .....	EN 55015, EN 55032, EN55035, EN 61547, EN 61000-3-2, EN 61000-3-3
US Safety.....	ANSI/UL 1598
US EMC .....	47 CFR Part 15 Class B
Canadian Safety.....	CSA C22.2 No. 250.0
Australia/NZ .....	RCM
Global CB Certification/IECEE .....	IEC 60598-2-5 (IEC 60598-1)
India .....	BIS IS 10322(Part5/section5)
Korea.....	KS C 9832, KS C 9835

# EXTERIOR LINEAR PRO GRAZE QUAD

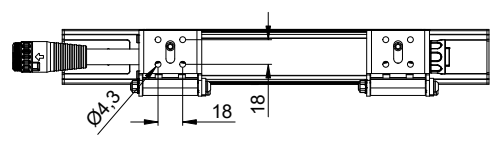
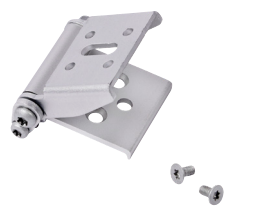
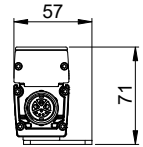
OUTDOOR LINEAR GRAZE FIXTURE WITH COLOR BOOSTING TECHNOLOGY AND DEDICATED COLOR TEMPERATURE CHANNEL

SPEC SHEET

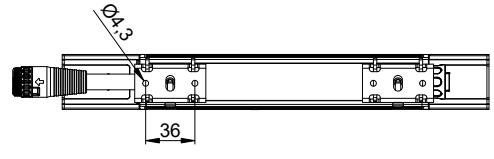
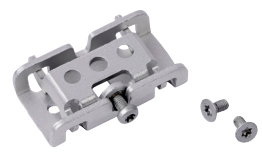
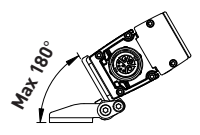
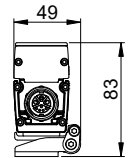
## MOUNTING OPTIONS



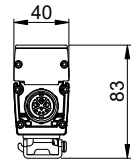
Flange Bracket



Adjustable Bracket



Quick-mount Bracket



HARMAN PROFESSIONAL INC. • 8500 BALBOA BOULEVARD • NORTHRIDGE • CA 91329 • USA • +1 818 893 8411

©2026 HARMAN Professional. All rights reserved. Martin® is a registered trademark of HARMAN Professional Inc. registered in the United States and/or other countries. Features, specifications, and appearance are subject to change without notice.

Version 20260114



# EXTERIOR LINEAR PRO GRAZE QUAD

OUTDOOR LINEAR GRAZE FIXTURE WITH COLOR BOOSTING TECHNOLOGY AND DEDICATED COLOR TEMPERATURE CHANNEL

SPEC SHEET

## TECHNICAL SPECIFICATIONS

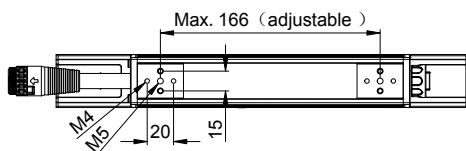
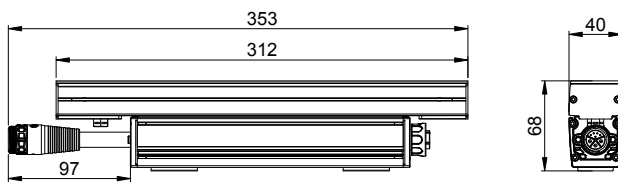
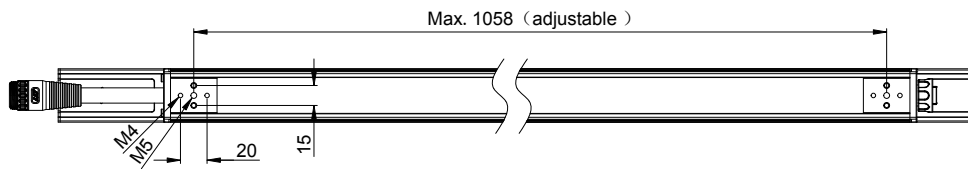
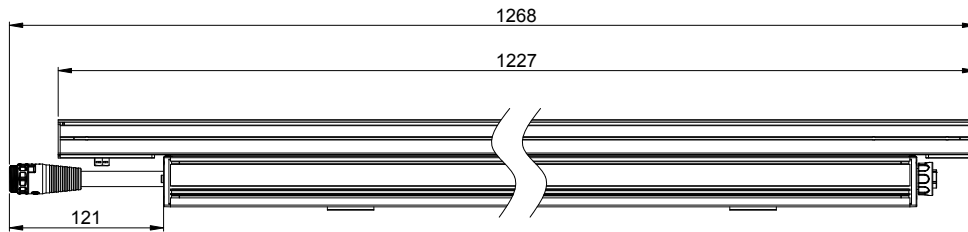
### ENVIRONMENTAL

RoHS .....	Compliant
REACH .....	Compliant
WEEE .....	Compliant
Proposition 65 .....	Compliant
FSC .....	Certified cardboard inlay and outer packaging

## DIMENSIONS

### PHYSICAL

Length - 1 ft Version .....	312mm (1 ft)
Length - 4 ft Version .....	1227mm (4 ft)
Width .....	40 mm (1.57 inch.)
Height .....	68 mm (2.67 inch)
Weight - 1 ft Version .....	0.85 kg ( 1.9 lbs)
Weight - 4 ft Version .....	2.8 kg (6.2 lbs)



*Brackets must be ordered separately  
All measurements in mm*