

THE WOODROFFE GOBO COLLECTION,
EXCLUSIVELY FOR THE **MAC 2000**


Martin

www.martin.com

The Woodroffe Gobo Collection

Thank you for choosing the Woodroffe Gobo Collection from Martin for the MAC 2000 Profile.

This leaflet contains instructions for changing the gobos in your existing fixture. On the reverse side of this page, the correct standard layout of the gobo set is shown in detail.

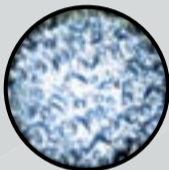
Should you have any questions, please contact your local Martin distributor.

Martin Professional A/S

www.martin.com

Special Note:

The structured glass gobo 'Limbo', originally installed in the MAC 2000 Profile in position 5 on wheel 1, remains in the fixture in the same position under the new name 'Crystal'.

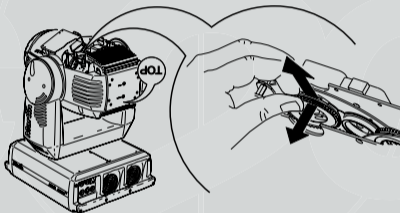


The structured glass gobo 'Limbo Doughnut' in position 1 on wheel 2 needs to be removed. As this gobo was originally glued into its gobo holder, a new gobo holder and retention spring are included with your new gobos.

Procedure for replacing a gobo

To replace a rotating gobo in the MAC 2000 Profile II:

1. Disconnect the fixture from power and allow it to cool.



2. Lock the head in the upside-down position, as indicated by the text on the rear panel, and remove the bottom cover (see Fig. A). Turn the gobo wheels as required to access the desired position. Pull the gobo holder away from the wheel slightly to release it, then remove it.

3. Remove the gobo retention spring from the gobo holder and drop the gobo out of the holder.
4. Insert the new gobo in the holder. Important: if one side of a gobo is more reflective, this side must face towards the lamp, and the darker side must face away from the lamp

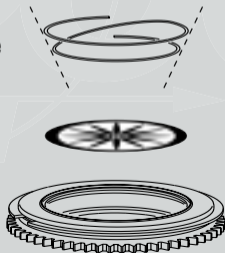


Warning:

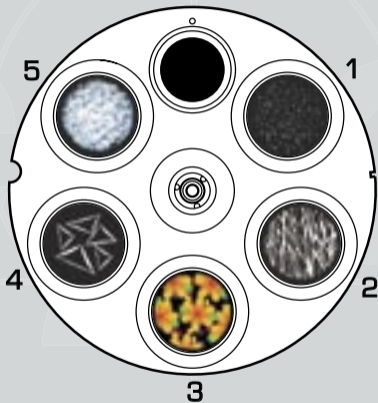
To minimize the risk of gobo overheating and damage, turn the more reflective side of a gobo towards the lamp.

The less reflective side of a gobo will absorb less heat if it faces away from the lamp.

5. Insert the spring with the narrow end against the gobo.(see Fig.C) To identify the narrow end, press the spring flat: the narrow end is on the inside. Push the wider end of the spring in under the lip of the holder.
6. Work the rim of the gobo holder under both clips on the gobo wheel and snap the gobo holder back into position. If necessary, a small screwdriver or similar tool may be used to pry the clips away from the wheel.
7. Replace the bottom cover and release the pan and/or tilt locks before reapplying power.

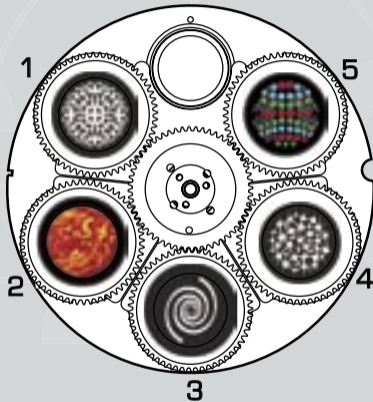


The Woodroffe collection as installed in the MAC 2000 Profile II



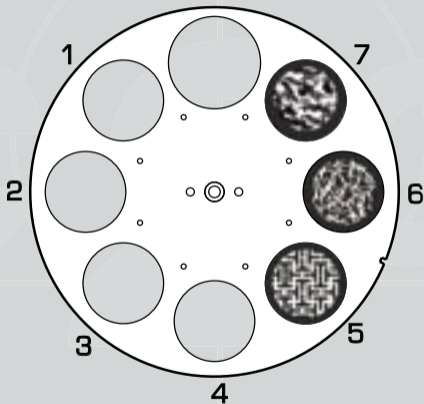
Wheel 1

The Woodroffe collection as installed in the MAC 2000 Profile II



Wheel 2

The Woodroffe collection as installed in the MAC 2000 Profile II



Wheel 3

COLOR WHEEL ONE



MATTICUS



REEDS



LILJUM



QUINTUPLE



CRYSTAL

COLOR WHEEL TWO



MOROCCAN



MELTEN



SPRING



ETHIOS



MULTICOORS

COLOR WHEEL



MAZE



STICK MEN



BOTANICAL

Martin
www.martin.com