

3DPartsfinder

For all technicians and customers we have a tool that makes it easy to view all parts in a product. The tool is called 3DPartsfinder and shows you each product in 3D. It makes it easy to understand how each product is put together and helps you to the identify spare-parts you need.

We started creating 3DPartsfinder back in the days when MAC III Profile was launched. Almost all of our new products has been added to 3DPartsfinder. Even products older than MAC III Profile has been added to the tool and we continuously improve the library of products.

3Dpartsfinder works with internet explorer on a Windows PC only. Files are displayed in an ActiveX component installed in your browser the first time you run 3DPartsfinder, please make sure that you install it when you are prompted.

Minimum Hardware Requirements* for 3DPartsfinder:

- RAM: 2 GB or more
- Video Card: A graphics adapter with 3D OpenGL acceleration, NVIDIA Quadro FX recommended
- Processor: Intel or AMD

3Dpartsfinder is implemented at my.martin.com, martin.com and we also have an offline version of the tool.

* Information subject to change without notice. 3DPartsfinder is provided 'As is'. Performance issues experienced even when minimum requirements are met are unfortunately not supported.

How to use the offline version

Download the offline version and watch the video **"3DPartsfinder"** for how to use the tool.

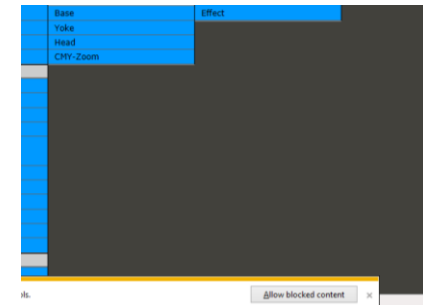
Name	Date modified	Type
Content	13-02-2014 10:17	File
SpryAssets	10-02-2014 12:52	File
3DPartsfinder.html	13-02-2014 10:18	HTM

Open and extract the files to a folder of your choice

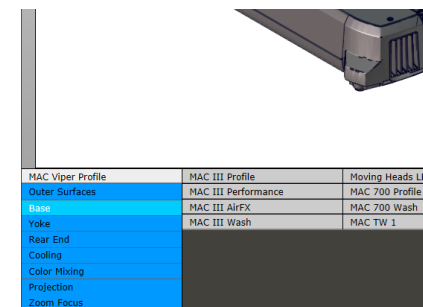
Double-click on 3DPartsfinder.html

Allow the installation of software from Dasault Systems.

Allow blocked content in the browser window



Browse the menu and select an item under a product of your choice.



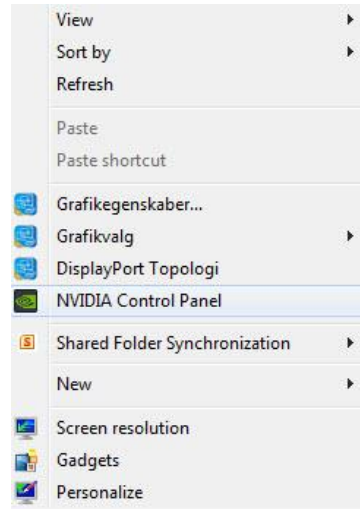
Troubleshooting

Some laptops and PC's comes with more than one graphics card. In these cases it may be the case that you need to specify what graphics card is used.

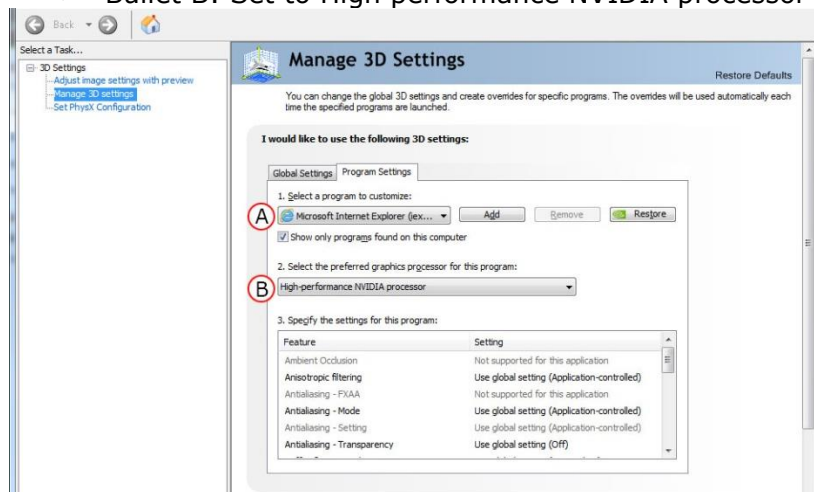
These Configurations can give performance issues when using our 3DPartsfinder.

Suggested Solution:

1. Right-Click your desktop and select NVIDIA Control Panel
2. Select Manage 3D settings



- Bullet A: Set to Microsoft Internet Explorer
- Bullet B: Set to High performance NVIDIA processor



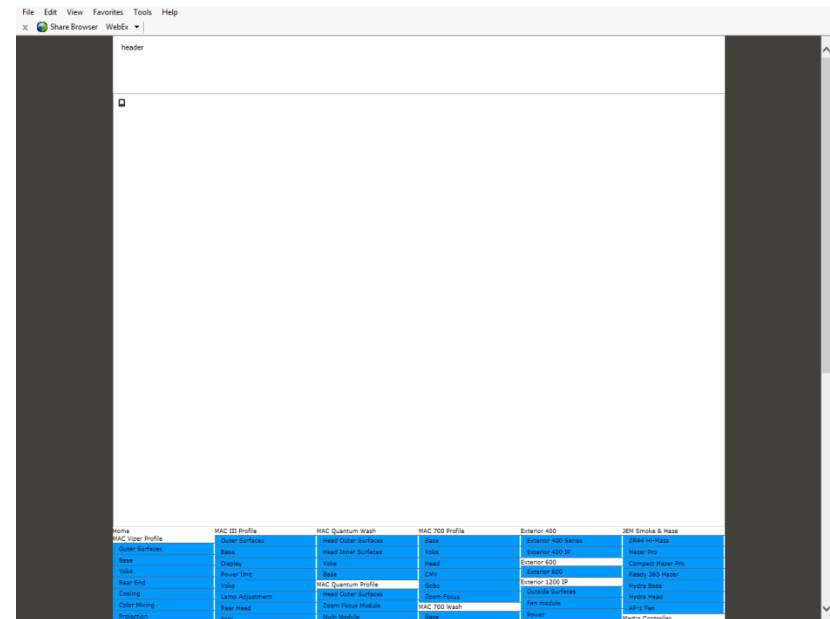
FAQ

Question:

Why cant I get 3DPartsfinder to work?

Answers:

1. Are you using Internet Explorer
2. Did you remember to allow blocked content as you are prompted when executing the html file
3. Are you running 3DPartsfinder from Appdata in a zipped or from a server folder, then please extract the zipped folder to your C: drive.



* Information subject to change without notice. 3DPartsfinder is provided 'As is'. Performance issues experienced even when minimum requirements are met are unfortunately not supported.