

Photometric Report

ELP CL ZOOM LENS 15-30 DEGREE — MEDIUM

SPEC SHEET

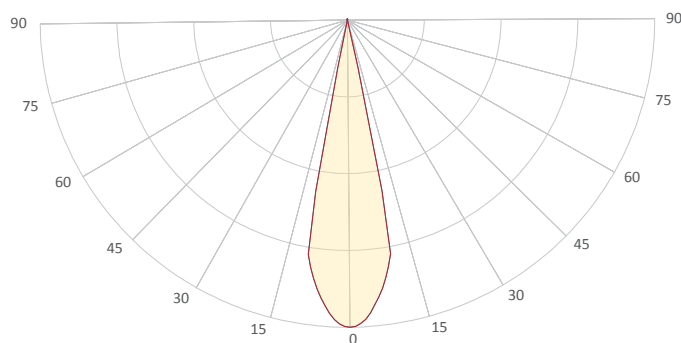
MARTIN PROFESSIONAL R&D OPTICAL LABORATORY

GENERAL SPECIFICATIONS



Total Fixture Output:	7150 lm
Light Engine Output:	20 klm
Efficacy:	28 Lumen/Watt
Lens Option:	N/A
Zoomrange:	15–30°
CRI:	83
CQS:	91
TM-30 Rf:	85
TM-30 Rg:	111
TLCI:	83
Color Temperature:	Variable

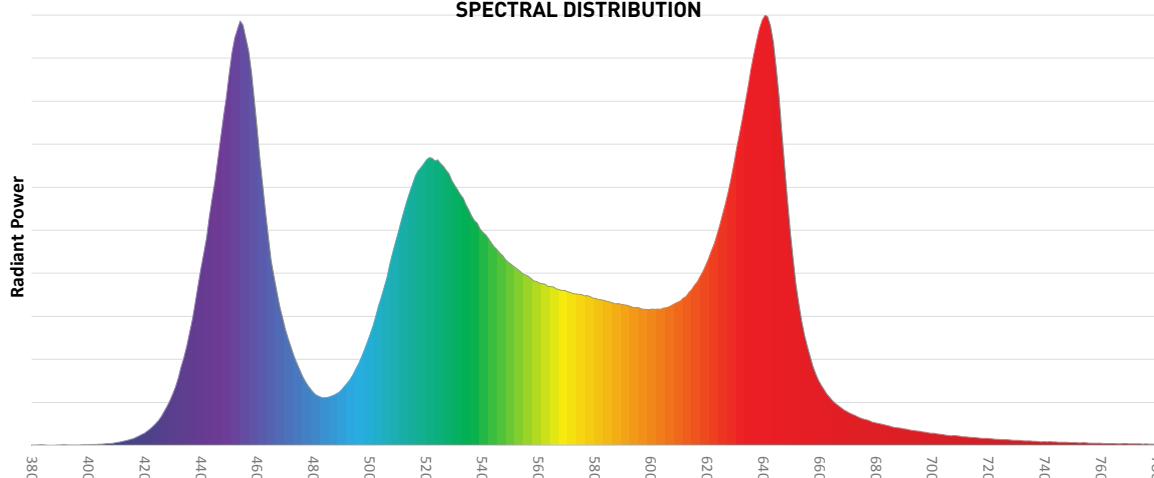
MEASUREMENT



- Vertical - Horizontal

Catalog Number:	9045121618
Measured Output:	7023 lm
Measured Peak:	61912 cd
Consumed Power:	255 W
Efficacy:	27.5 Lumen/Watt
Beam Angle (50%):	22.4°
Field Angle (10%):	24.3°
Cutoff Angle (3%):	25°
Measurement Condition:	
Ambient Temperature:	25° +/- 5°C
AC Supply:	230V/50Hz

SPECTRAL DISTRIBUTION

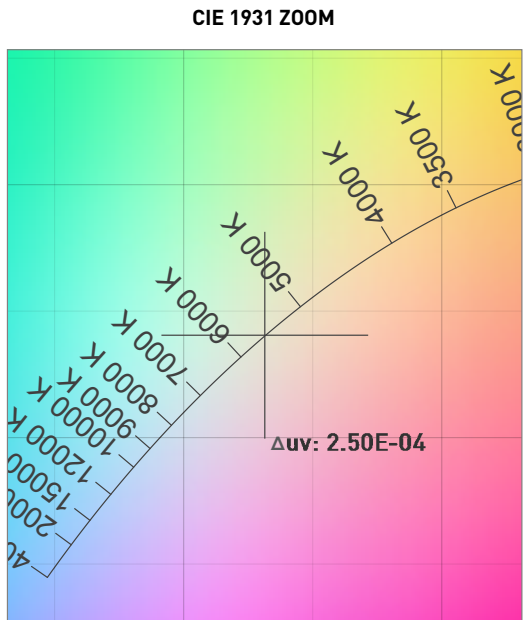
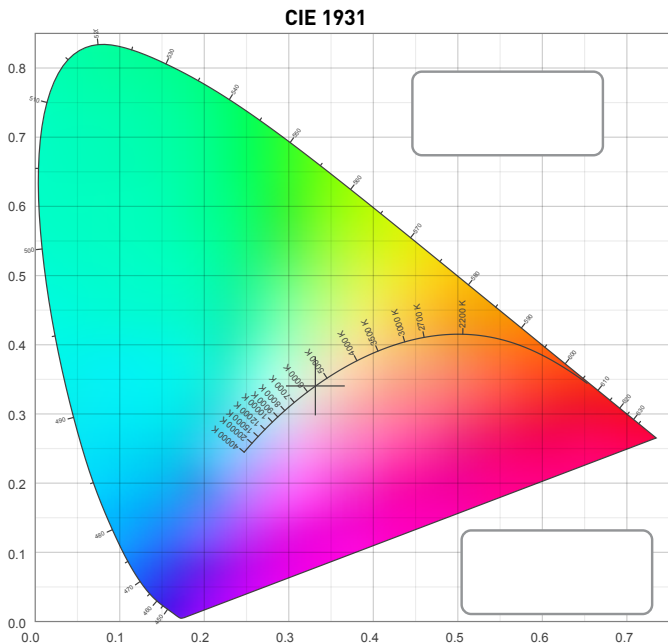


Photometric Report

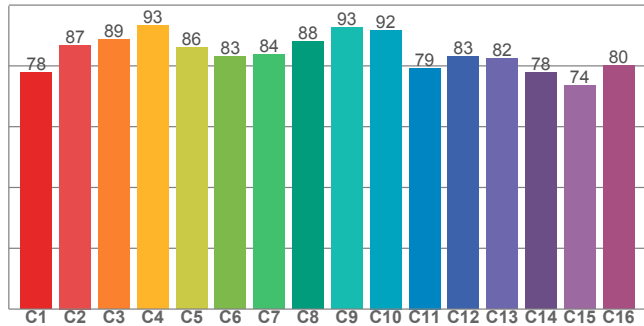
ELP CL ZOOM LENS 15-30 DEGREE — MEDIUM

SPEC SHEET

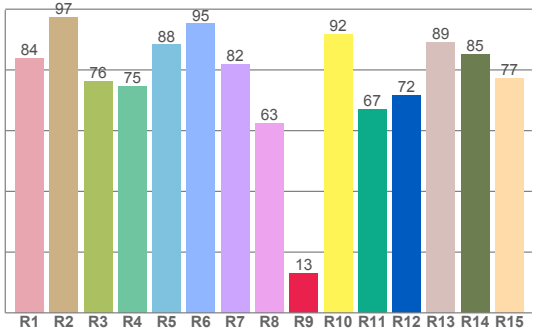
CHROMATICITY



TM30: 84.6



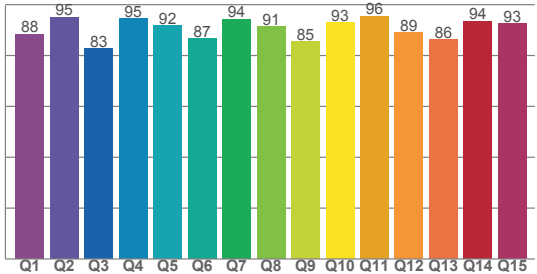
CRI: 82.5 (R1-R8)



COLOR PARAMETERS

Color Temperature	Color Rendering Index	Red Component	Color Fidelity	Color Gamut
CCT	CRI	CRI R9	TM30 Rf	TM30 Rg
5550 K	82.5	13.1	84.6	111.1

CQS: 89.9



Television Lighting Consistency Index	Color Quality Scale	Color Coordinate CIE 1931	Color Coordinate CIE 1931	Color Coordinate CIE 1964	Color Coordinate CIE 1964	Color Deviation from Black Body
TLCI	CQS	x	y	u	v	Δuv
83	89.9	0.331	0.340	0.206	0.318	2.50E-04

Photometric Report

ELP CL ZOOM LENS 15-30 DEGREE — MEDIUM

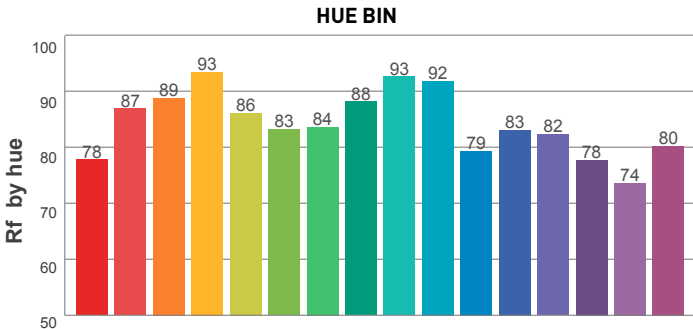
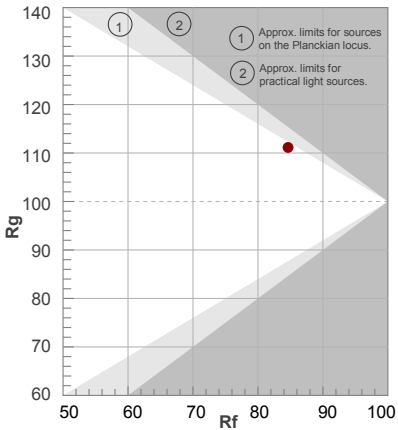
SPEC SHEET

TM30

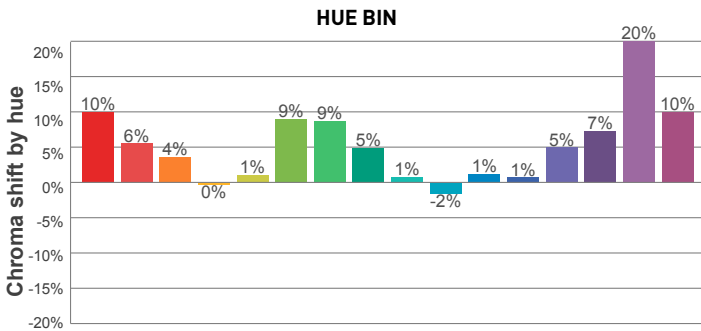
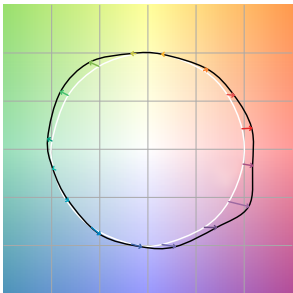
Rf 84.6
Fidelity index Rf

Rg 111.1
Gamut index Rg

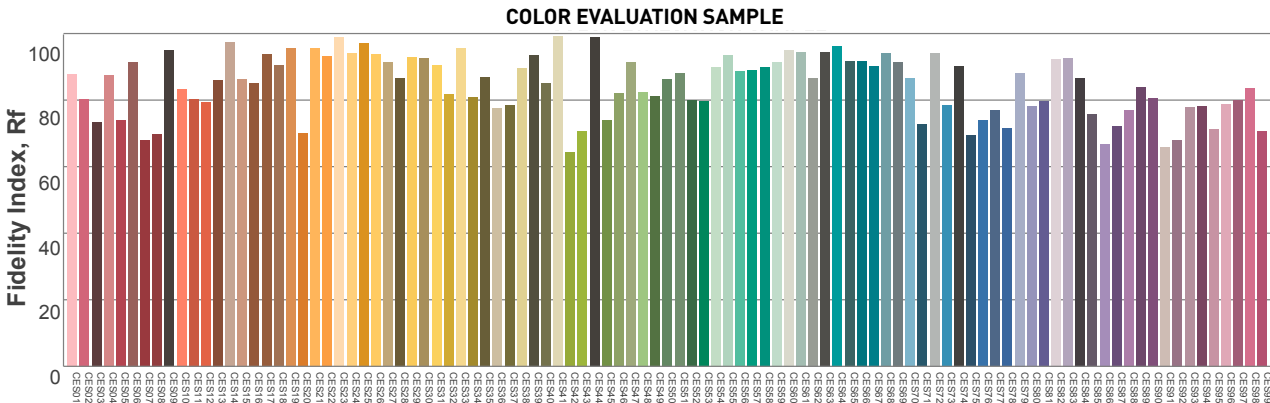
Hue Bin	Rf	Graphic shifts (%)	
		Chroma	Hue
1	78	10%	-1%
2	87	6%	-5%
3	89	4%	-3%
4	93	0%	2%
5	86	1%	5%
6	83	9%	6%
7	84	9%	1%
8	88	5%	-1%
9	93	1%	0%
10	92	-2%	3%
11	79	1%	11%
12	83	1%	11%
13	82	5%	13%
14	78	7%	10%
15	74	20%	7%
16	80	10%	0%



COLOR VECTOR GRAPHICS



COLOR DISTORTION GRAPHICS

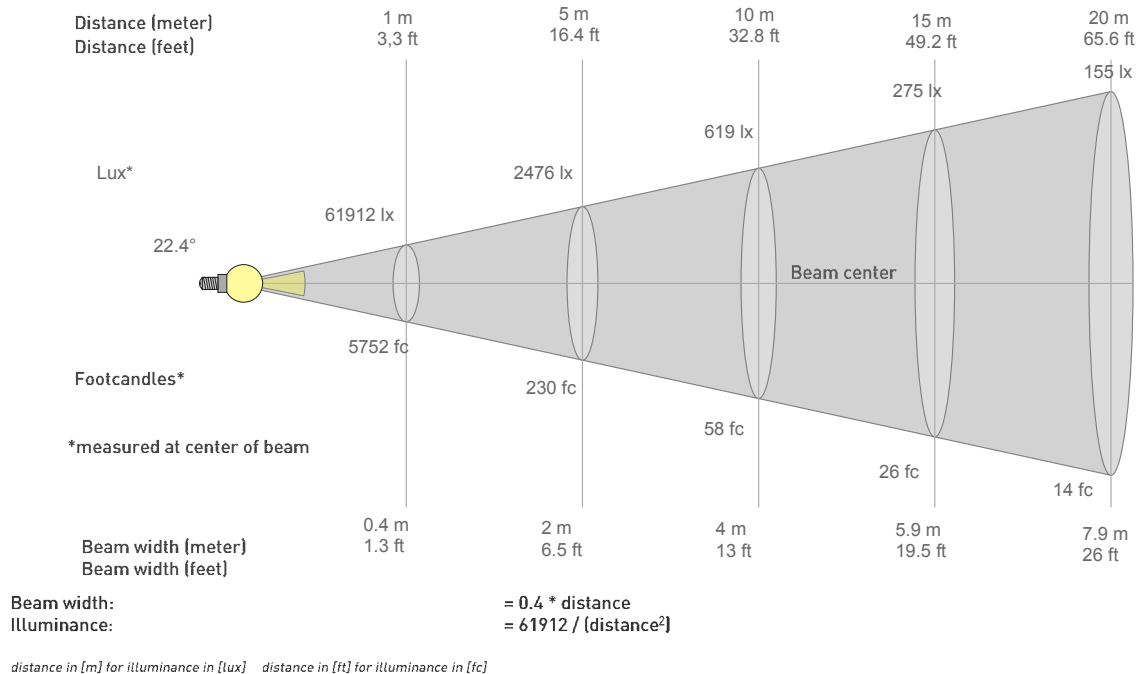


Photometric Report

ELP CL ZOOM LENS 15-30 DEGREE — MEDIUM

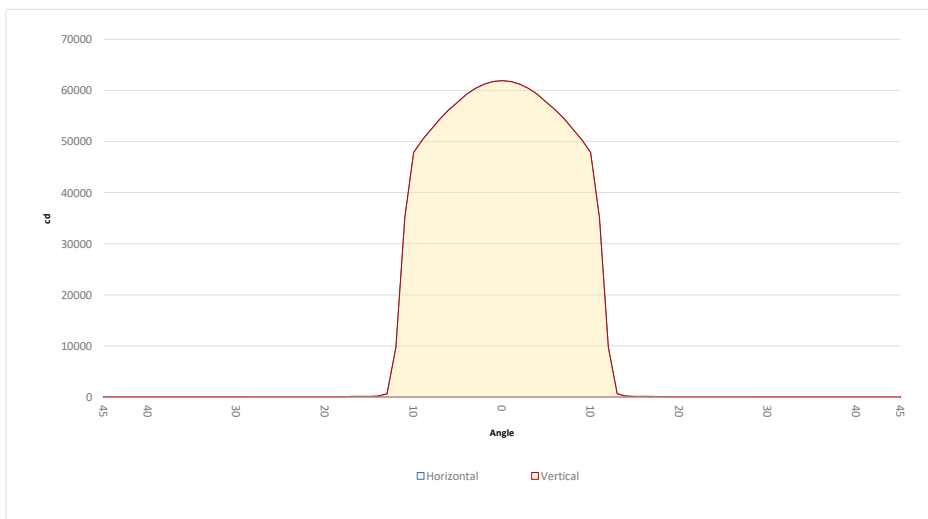
SPEC SHEET

BEAM DETAILS



BEAM ILLUMINANCE FROM 1-20M

1m	2m	3m	4m	5m	6m	7m	8m	9m	10m	11m	12m	13m	14m	15m	16m	17m	18m	19m	20m
3.3ft	6.6ft	9.8ft	13.1ft	16.4ft	19.7ft	23ft	26.2ft	29.5ft	32.8ft	36.1ft	39.4ft	42.7ft	45.9ft	49.2ft	52.5ft	55.8ft	59.1ft	62.3ft	65.6ft
61912lx	15478lx	6879lx	3869lx	2476lx	1720lx	1264lx	967lx	764lx	619lx	512lx	430lx	366lx	316lx	275lx	242lx	214lx	191lx	172lx	155lx
5751.8fc	1437.9fc	639.1fc	359.5fc	230.1fc	159.8fc	117.4fc	89.9fc	71fc	57.5fc	47.5fc	39.9fc	34fc	29.3fc	25.6fc	22.5fc	19.9fc	17.8fc	15.9fc	14.4fc



BEAM ANGLE 50%	FIELD ANGLE 10%	CUTOFF ANGLE 3%
22.4°	24.3°	25°